

SMARTCOLD
WWW.SMARTCOLD.TECH

大连智冷科技有限公司
辽宁省大连市甘井子区营城东路

SMARTCOLD TECH. CO., LTD.
Yingcheng east Rd, Ganjingzi District, Dalian, China.
Tel/Fax: +86 411 663 2221
Mobile: +86 1333 2222 715
Wechat/QQ/Whats app/Skype:+86 1333 2222 715



SMARTCOLD
智冷

BUSINESS
BROCHURE
SMARTCOLD TECH CO., LTD

大连智冷科技有限公司

✉ sales@smartcold.tech 📞 +86 411 663 2221 🌐 www.smartcold.tech

SMARTCOLD TECH REFRIGERATION INDUSTRY

大连智冷科技以完整的产品带满足食品冷冻冷藏领域，成套工程的技术咨询、个性化系统解决方案，工程安装与调试，维护保修和改造审计等全程一体化服务。

TABLE OF CONTENT

产品目录

制冷压缩机组 Compressor Unit	-----15-24
制冰 Ice Making	-----25-32
蒸发式冷凝器 Evaporative Condenser	-----33-36
食品加工设备 Food Processing Equipment	-----37-44
冷库 Cold Store	-----45-46
冷风机 Air Cooler	-----47-58
附属设备 Refrigeration Equipment	-----59-70

ABOUT US

关于我们



大连智冷科技有限公司，始创于 2002 年，前身为大连思砦制冷有限公司。企业以制冷技术为核心，专注于制冷产业的发展与实践，致力于制冷相关设备的研发，是一家集研发、设计、生产、销售、服务于一体的大型制造型企业。企业采用先进的生产模式，依托科学的制造工艺，标准化的服务体系，打造一流的产品。

SmartCold Tech Co., Ltd. (Dalian), was founded in 2002 under the name Dalian Sitong Refrigeration Co., Ltd. Revolving its operations around refrigeration technologies at its core, devoting itself to the R&D of refrigeration-related equipment, in addition to the design, production, sales and service sectors it incorporates into its main businesses. SmartCold Tech boasts state-of-the-art production mode, scientific manufacturing technology and standardized service system, delivering top-tier products based on them.



诚信创新，品质铸就。



智冷科技，成就未来。

CORPORATE CULTURE

企业构建了完善的产品研发体系，实施专业化、综合性、一站式的产品服务模式，打造国际化的服务体系、优秀的整合能力、精湛制造技艺，扩展专业影响力，自成立以来，已销往俄罗斯、巴基斯坦、马来西亚、印度、泰国、菲律宾、缅甸、新加坡、越南、柬埔寨、老挝、澳大利亚等全球近 50 个国家和地区，年均出口额 350 万美元，并在越南、缅甸、泰国等国家顺利开展制冷项目，树立业内的良好口碑，引领制冷行业发展。

Relying on the sophisticated product R&D system, combined with the professional and comprehensive one-stop product service model, We has created an international service system with its outstanding integration capabilities and flawless craftsmanship, exerting a far-reaching influence. Since the inception, the products have been sold to nearly 50 countries and regions around the world, such as Russia, Pakistan, Malaysia, India, Thailand, the Philippines, Myanmar, Singapore, Vietnam, Cambodia, Laos, and Australia, generating USD 3.5 million worth of exports annually on average. In addition, the company has also successfully launched refrigeration projects in Vietnam, Myanmar, and Thailand. SmartCold Tech enjoys a sterling reputation among its customers, as it continues to cement its position as a pacesetter in the refrigeration industry.



经营理念 BUSINESS PHILOSOPHY

专注树立口碑，专业赢得市场。

Focus on building reputation, professional to win the market.



核心价值观 CORE VALUES

厚德载物、创新卓越、精益求精、合作共赢。

Social integrity, innovation, excellence, win-win cooperation.



愿景 VISION

建一流制造企业，创行业领导品牌。

Build itself into a first-class manufacturer and a leading brand in the industry.



使命 MISSION

赋能制冷行业，助力产业发展。

Empowering and contributing to the refrigeration industry so as to make common progress.

HISTORY 企业历程



开创食品冷冻冷藏及工业制冷事业。

Pioneering the food refrigeration and industrial refrigeration.

开辟制冰事业。
开辟冷库成套设备与工程事业。

Started ice making and freezer equipment and engineering business.

开辟工业用空气冷却器事业。
导入蒸发式冷凝器技术。

Started air cooler business.
Introduce the evaporative condenser business.

2002

制冷市场调研
REFRIGERATION
MARKET RESEARCH

基于大连制冷设备的产品优势，对制冷行业进行调研，对制冷市场进行精准研判。

Based on the product advantages of Dalian refrigeration equipment, the refrigeration industry was investigated, and the refrigeration market was accurately analyzed and judged.

2003

成立思砮制冷
SET UP SITONG
REFRIGERATION

公司全称大连思砮制冷设备有限公司，注册资金 50 万元，专注于制冷设备的生产、销售、研发。

Company name is Dalian Sitong Refrigeration Equipment Co., LTD., focusing on the production, sales and research and development of refrigeration equipment.

2010

扩大生产规模
SCALE UP PRODUCTION

企业扩大公司产能，投资 450 万人民币建立 1300 平米的现代化标准厂房，采用国际先进的制造设备，实现现代产业发展。

Expands production capacity, invests 4.5 million to build a modern standard factory building of 1,300 square meters, adopts international advanced manufacturing equipment, and realizes modern industrial development.



导入食品速冻机事业。

Introduce the food quick freezer business.



开辟国际贸易事业。
开辟互联网事业。

Started international business.
Started internet business.



导入商用制冰机事业。

Introduce the commercial ice making business.

2017

设立义乌办事处
SET UP YIWU OFFICE

企业开辟国际市场，成立义乌办事处，驻派员工 4 人，致力于国外客户的开发与服务。

Open up the international market, set up an office in Yiwu, stationed 4 employees, dedicated to the development and service of foreign customers.

2019

成立大连总公司
SET UP DALIAN HEAD COMPANY

企业出口业务增多，正式成立大连智冷科技有限公司，主打国际市场出口业务，实现企业的战略发展。

Export increased, established SMARTCOLD TECH CO., LTD. focus on the export business in the international market and realize the strategic development of the enterprise;

2021

成立济南分公司
SET UP JINAN BRANCH

在山东成立了智冷（济南）工业有限公司，致力于研发和生产高端品质的制冷设备，为企业持续发展提供源源不断的绿色动力，实现企业飞速发展。

SMARTCOLD TECH (JINAN) CO., LTD. was established in Shandong, dedicated to the development and production of high-quality refrigeration equipment.

WHAT WE DO 我们是做什么的?

企业专注于制冷行业的发展与实践，致力于制冷相关设备的研发与生产，依托稳定的低温制冷技术，打造一流的制冷相关设备，产品涵盖制冷压缩机、蒸发式冷凝器、速冻机、冷风机、制冰以及冷库成套工程等，广泛应用于渔业、农业、科研所、电子、化工等企业、血站、医院、防疫站及畜牧系统等行业，适用于中央空调、生物制药、食品加工、机械制造、电子、电镀、造纸、化工等领域。产品已销往俄罗斯、巴基斯坦、马来西亚、印度、泰国、菲律宾、缅甸、新加坡、越南、柬埔寨、老挝、澳大利亚等全球近 50 个国家和地区，受到国际市场的一致好评与青睐。



服务

SERVICES



维保

MAINTENANCE



计划

PLANNING



建造及安装

CONSTRUCTION & INSTALL



设计

DESIGN



机械与公用工程

MECHANICAL & UTILITY



智冷科技有限公司不断发展和制定新的标准，以满足市场和客户的需求。今天，我们是一家活跃在全球的公司，尤其是在制冷行业。客户是我们一切工作的核心，我们与他们建立了强大的合作伙伴关系。我们为客户提供个性化和可持续的解决方案。

OUR PRODUCTS

SMARTCOLD TECH CO., LTD has continued to develop and set new standards to meet the needs of the market and its customers. Today, SMARTCOLD is a globally active company, particularly for the refrigeration industry. Our customers are at the heart of everything we do and we build strong partnerships with them. We provide individual and sustainable solutions for a wide range of customer-specific applications.

SmartCold Tech is committed to the advancement of the refrigeration industry and is dedicated to the development and production of refrigeration-related equipment. Relying on the stable low-temperature refrigeration technology, the company creates first-class refrigeration-related equipment, including refrigeration compressors, evaporative condensers, instant freezers, and air coolers, as well as complete sets of ice maker and cold storage. These products are widely used in fishery, agriculture, electronics, and chemical engineering corporations, as well as blood stations, hospitals, epidemic prevention stations, and animal husbandry systems. On top of those, they are also applicable in such fields as central air conditioning, biopharmaceuticals, food processing, machinery manufacturing, optics, photovoltaics, , papermaking, and chemical engineering. Profitable sales in nearly 50 countries around the world, including Russia, Pakistan, Malaysia, India, Thailand, the Philippines, Myanmar, Singapore, Vietnam, Cambodia, Laos, and Australia, make the best proof for SmartCold Tech's reputation in the international market.

Our 企业优势 Strengths

眼光独到，战略到位

Unique Insights and a Forward-looking Strategy

企业拥有独到的战略发展眼光，能够慧眼识别制冷市场机遇，以专业打造的态势，建立专业综合生产体系，应对市场变化，及时做出有效反应的能力。拥有广阔视野来面对复杂多变的市场环境，找准市场需求，服务客户。

Unique strategic insights have allowed the company to identify opportunities in the refrigeration market based on its foresight, build a professional integrated production system on the strength of its professionalism, as well as respond promptly and efficiently to market changes. Moreover, a broad vision has also been a great navigator for the complex and volatile market environment, allowing the company to pinpoint market needs and offer personalized solutions to customers.

专业团队，技术精湛

Professional Team and Superb Technology

企业深耕制冷领域数年，打造具有多年丰富生产技术团队，制造技术高超，充分了解掌握现代制冷行业的专业优势，贯穿生产前、生产中、生产后等多环节管理监控；经过实践与行业历练，专业度高，应对市场变化能够迅速调整并做出精准发展战略。

Years of experience in the refrigeration field have brewed a technically-gifted and seasoned manufacturing/production team in SmartCold Tech. Personnel in the team have a complete mastery over the specialty "trump cards" of the modern refrigeration industry, and are fully qualified in managing and supervising multiple operational phases prior to, during, and after production. Their edge in experience and practical proficiency makes them experts in the industry, facilitating adaptations and targeted strategy formulations in response to market changes.

强势运营，高效发展

Potent Operation and Efficient Development

企业传承和发扬现代制冷科技行业理念与体系，根据时代发展、产业风向整合资源，创新品质意识，以优质的、多元的、全面的产品品类，回馈信赖企业及品牌的客户群体，实现企业的高效发展。

SmartCold Tech carries forward the concepts and systems representative of the modern refrigeration technology industry as well as integrates resources in line with the times and industry trends. At the same time, it also redefines existing quality awareness, leveraging its high-quality, diversified and complete product categories to benefit its loyal customers and develop efficiently as a company.

经营规范，树立口碑

Standardized Management and Established Reputation

企业作为专业现代制冷设备生产主体，技术的高超和创新、团队的规范和合作、技能的提升和管理，服务的及时和高效，形成市场与行业核心竞争力，获得客户优秀口碑。

SmartCold Tech lives up to its reputation as a professional modern refrigeration equipment producer on the back of its superb technical and innovative capabilities, standardized and cooperative team, competence improvement and management system, as well as timely and efficient services. These qualities underpin its core competitiveness in the market and industry, helping it earn widespread popularity among customers.

“

为客户提供项目建筑布局和制冷系统的最佳规划，以制冷系统的目标能效管理为原则，通过智能化控制、设备优化，提供整体政工的项目。

”

OUR FAMILY

团队介绍



拥有一支专业的团队 A Professional Team

企业成员拥有多年的制冷产品研发及生产经验，团队数量持续增加。

Our personnel are all veterans in the R&D and production of refrigeration products. We are also planning to invigorate the team further by recruiting more and more talents every year.



拥有一支年轻的团队 A Young Team

企业成员年轻且充满朝气和创新精神，以饱满的热情全身心投入工作。

We have a young but highly-devoted crop of personnel who are full of vigor, passion and innovative ideas.



拥有一支专注的团队 A Dedicated Team

企业成员坚信，好品质才能不负客户信任，只有专注才能做好品质。

The motto embedded into all our hearts goes by: only good quality can live up to the trust of customers, and only focus can secure good quality.



拥有一支有梦想的团队 An Ambitious Team

企业成员来自全国，之所以走到一起，是因为共同的梦想：赋能制冷行业，助力产业发展。

Our members come from all over the country for the same dream: to empower and contribute to the refrigeration industry to make common progress.



VISION

未来展望

未来，智冷科技必将深耕制冷市场，不遗余力助推品质制冷设备产品，以立于行业巅峰之林。立足成熟制冷技术及管理优势，力争为每一位客户提供制冷解决方案，着力打造企业品牌及产品服务体系，体验企业带来的无限价值与魅力。与此同时，企业战略规划将继续拓展全球事业之版图，与行业内企业战略合作，充分整合各项战略资源打造项目品牌，为企业及品牌全面发展储备可持续的绿色能量，以匠心精神构建企业磅礴腾飞之势，拓展事业版图，实现企业实质性的飞跃发展。

In prospect, we will dig deeper into the refrigeration market and spare no effort in promoting the production of high-quality refrigeration equipment, striving to remain as the forerunner of the industry. Based on mature refrigeration technology and management advantages, we endeavor to provide every customer with refrigeration solutions, and build a corporate brand and product service system, allowing every customer to experience the infinite value and charm brought by the Company. At the same time, with the strategic planning, we will continue to expand the global business, cooperate with peers, fully integrate various strategic resources to build project brands. Moreover, we will reserve sustainable green energy for the overall development of the Company and the brand, gather momentums for future take-off with ingenuity, obtain more shares in the market. We are confident to make the giant leap with concrete results!



OUR HONORS

企业荣誉



荣誉

企业秉持“专注树立口碑，专业赢得市场”的经营理念，肩负“赋能制冷行业，成就产业发展”的使命努力践行。企业聚合了众多年轻有为、经验丰富的有志之士，匠心打造品质服务。企业通过完善的管理制度及富有竞争力的激励机制，并不断加强全面管理，注重提高自身素质，旨在为员工提供全方位的发展空间，与企业共创辉煌。科学的管理模式，专业的技术水平，贴心的服务态度，在激烈的市场竞争中树立良好的企业形象，为企业的进一步发展壮大奠定了坚实基础。面对机会和挑战，企业将以专业的技术、饱满的热情、多元的发展目标、共赢的发展态势竭诚为客户服务。



活塞式压缩机

Reciprocating Compressor Unit

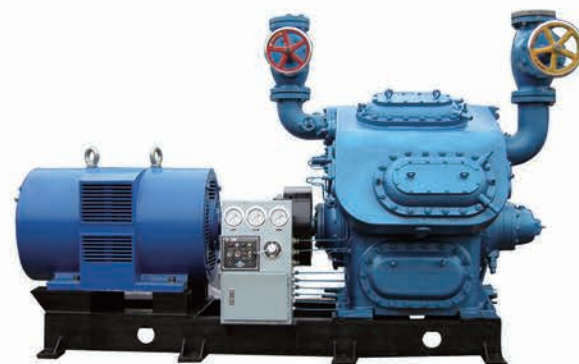
能力范围 Scope

制冷量 | Refrigeration Capacity 26.7-512 kW (-15°C/30°C)

应用领域 Application

广泛应用于国民经济各部门需要实现人工制冷的场合，如石油、化工、制药等工业产品的生产，国防、科研方面的低温试验，食品的低温加工贮藏和运输，工厂、医院及公共场所等大型建筑的空气调节等。

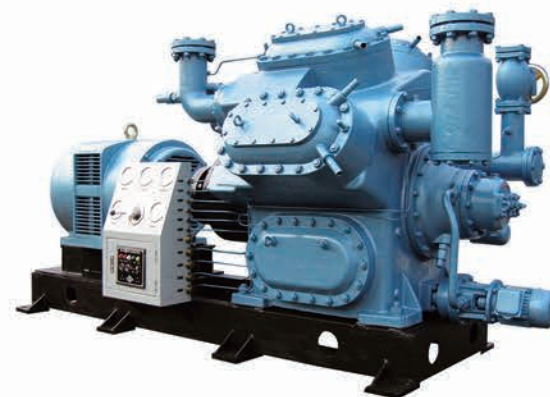
Widely used in various fields need to achieve artificial refrigeration, such as petroleum, chemical industry, pharmaceutical, cryogenic laboratory of national defense and scientific research, food low temp processing, storage and transportation, and low temperature test, low temperature processing of food storage and transportation, air conditioning in factories, hospitals and other large public places building.



产品特性 Features

- 采用Y系列高效节能型电动机，防护等级为 IP23/IP54/IP55
- 机组转速高、体积小、零部件互换性强
- 压缩机轴封为进口轴封，密封垫为进口原材料
- 设有能量调节装置，可实现无负荷启动
- 装有放油三通阀，可在正常运转中加油
- 运行安全可靠

- * Adopt Y series of high efficiency energy-saving motors, protection class IP23/IP54/IP55
- * Unit is with high speed, small size and interchangeable parts
- * Compressor shaft seal and gasket are import brand.
- * Provided energy adjustment device to realize unit start without load
- * Equipped with three-way oil drainage valve. Oil can be charged during normal operation
- * Safe and reliable operation



100系列活塞式压缩机技术参数表

Series 100 Reciprocating Compressor Unit Technology Parameter Table

型号 Model			2AZ10	4AV10	6AW10	8AS10	4ASJ10	8ASJ10	
机组 Unit	制冷量 Refrigeration Capacity	标准工况 Standard Condition	26.7	54	81.4	108	17.5 工况-35°C/+35°C	37.2 工况-35°C/+35°C	
		空调工况 Air Conditioning Condition	54	116	174.4	232.6			
	轴功率 Shaft Power	标准工况 Standard Condition	8.12	16	23.8	31.6	10.1 工况-35°C/+35°C	20.4 工况-35°C/+35°C	
		空调工况 Air Conditioning Condition	12	24	36	48			
压缩机 Compressor	活塞行程容积 Theoretical Displacement	m ³ /h	63.3	126.6	190	253.3	31.65 (94.95)	63.3 (190)	
	能量调节范围 Capacity Regulating Range			0,1/2,1	0,1/3,2/3,1	0,1/4 1/2,3/4,1	0,1/3,2/3,1	0,1/3,2/3,1	
	进气管径 Suction Pipe Dia.	mm	50	50	65	80	32 (50)	40 (65)	
	排气管径 Discharge Pipe Dia.	mm	40	50	65	80	32 (50)	40 (65)	
	冷却水耗量 Cooling Water Consumption	kg/h	300	500	750	1000	500	1000	
电机 Motor	功率 Power	标准工况 Standard Condition	13	22	37	45	15	30	
		空调工况 Air Conditioning Condition	15	30	45	55			
	电压 Voltage	标准工况 Standard Condition	V	380				380	
		空调工况 Air Conditioning Condition	V	380				380	
	转数 Revolution	标准工况 Standard Condition	r/min	960				960	
		空调工况 Air Conditioning Condition	r/min	960				960	
外形尺寸(长x宽x高) Outline (LxWxH)	标准工况 Standard Condition	mm	1495x747x850	1917x845x1320	2046x841x1153	2142x855x1167	1750x1135x1310	2663x1025x1978	
	空调工况 Air Conditioning Condition	mm	1495x747x850	1989x845x1320	2115x841x1147	2191x855x1167			
机组重量 Unit Weight	标准工况 Standard Condition	kg	575	1066	1330	1520	1300	1700	
	空调工况 Air Conditioning Condition	kg	603	1100	1480	1600			

注：
1. 适用条件：单级：最高排气压力 ≤ 1.5MPa，最高排气温度 ≤ 150°C。最大压差 ≤ 1.4MPa；双级：低压机，最高排气压力 ≤ 0.7MPa，最高排气温度 ≤ 120°C。最大压差 ≤ 0.8MPa；高压级，最高排气压力 ≤ 1.5MPa，最高排气温度 ≤ 150°C，最大压差 ≤ 1.4MPa
2. 括号内数据为低压机参数
3. 标准工况：-15°C/+30°C，空调工况：+5°C/+40°C

Note:
1. Conditions: Single-stage: the maximum discharge pressure ≤ 1.5MPa, the maximum discharge temperature ≤ 150°C, the maximum pressure ≤ 1.4MPa; two-stage: Low stage, the maximum discharge pressure ≤ 0.7MPa, Maximum discharge temperature ≤ 120°C, the maximum pressure ≤ 0.8MPa; High stage, the maximum discharge pressure ≤ 1.5MPa, the maximum discharge temperature ≤ 150°C, the maximum pressure ≤ 1.4MPa
2. Data in parentheses are the low stage parameters
3. Standard condition: -15°C/+30°C, Air conditioning condition: +5°C/+40°C

125系列活塞式压缩机组技术参数表

Series 125 Reciprocating Compressor Unit Technology Parameter Table

型号 Model			812.5	612.5	YF412.5	412.5	S812.5	
机组 Unit	制冷量 Refrigeration Capacity	标准工况 Standard Condition	250	187.5	125	125	81	
		空调工况 Air Conditioning Condition	545	409	272.5	272.5		
	轴功率 Shaft Power	标准工况 Standard Condition	70.5	53	35.5	35.5	44.2	
		空调工况 Air Conditioning Condition	106	79.5	53.5	53.5		
压缩机 Compressor	活塞行程容积 Theoretical Displacement		m ³ /h	565	424	282.5	282.5	141(424)
	能量调节范围 Capacity Regulating Range			0.1/4.1/2.3/4.1	0.1/3.2/3.1	0.1/2.1	0.1/2.1	0.1:1.1:2.1:3
	进气管径 Suction Pipe Dia.		mm	125	100	80	80	80(125)
	排气管径 Discharge Pipe Dia.		mm	100	80	60	60	60(100)
	冷却水耗量 Cooling Water Consumption		kg/h	1800	1500	1200	1200	1800
电机 Motor	功率 Power	标准工况 Standard Condition	kW	95	75	55	55	75
		空调工况 Air Conditioning Condition	kW	115	95	75	75	
	电压 Voltage	标准工况 Standard Condition	V	380				380
		空调工况 Air Conditioning Condition	V	380				
	转数 Revolution	标准工况 Standard Condition	r/min	1000				1000
		空调工况 Air Conditioning Condition	r/min	1000				
外型尺寸(长x宽x高) Outline (LXWXH)		标准工况 Standard Condition	mm	2233x1123x1450	2196x1078x1381	2028x1260x1484	2028x951x1375	2184x1031x1446
		空调工况 Air Conditioning Condition	mm	2415x1123x1450	2246x1078x1381	2124x1260x1484	2124x951x1375	
机组重量 Unit Weight		标准工况 Standard Condition	kg	2933	2378	2123	1998	2540
		空调工况 Air Conditioning Condition	kg	3555	2688	2287	2162	

注:
1. 适用条件: 单级: 最高排气压力 ≤ 1.5MPa, 最高排气温度 ≤ 150℃, 最大压差 ≤ 1.4MPa;
双级: 低压机, 最高排气压力 ≤ 0.7MPa, 最高排气温度 ≤ 120℃, 最大压差 ≤ 0.8MPa; 高压
级, 最高排气压力 ≤ 1.5MPa, 最高排气温度 ≤ 150℃, 最大压差 ≤ 1.4MPa
2. 括号内数据为低压机参数
3. 标准工况: -15℃/+30℃, 空调工况: +5℃/+40℃

Note:
1. Conditions: Single-stage: the maximum discharge pressure ≤ 1.5MPa, the maximum discharge
temperature ≤ 150℃, the maximum pressure ≤ 1.4MPa; two-stage: Low stage, the maximum
discharge pressure ≤ 0.7MPa, Maximum discharge temperature ≤ 120℃, the maximum pressure
≤ 0.8MPa; High stage, the maximum discharge pressure ≤ 1.5MPa, the maximum discharge
temperature ≤ 150℃, the maximum pressure ≤ 1.4MPa
2. Data in parentheses are the low stage parameters
3. Standard condition: -15℃/+30℃, Air conditioning condition: +5℃/+40℃

170系列活塞式压缩机组技术参数表

Series 170 Reciprocating Compressor Unit Technology Parameter Table

型号 Model			4AV17	6AW17	8AS17	4ASJ17	8ASJ17	
机组 Unit	制冷量 Refrigeration Capacity	标准工况 Standard Condition	256	384	512	81.4	163	
		空调工况 Air Conditioning Condition	558	840	1116			
	轴功率 Shaft Power	标准工况 Standard Condition	71.9	107.1	142	42.75	83.9	
		空调工况 Air Conditioning Condition	107	160	213			
压缩机 Compressor	活塞行程容积 Theoretical Displacement		m ³ /h	550	825	1100	137(412)	275(825)
	能量调节范围 Capacity Regulating Range			0.1/2.1	0.1/3.2/3.1	0.1/4.1/2.3/4.1	0.1/3.2/3.1	0.1/3.2/3.1
	进气管径 Suction Pipe Dia.		mm	100	125	150	65(100)	80(125)
	排气管径 Discharge Pipe Dia.		mm	80	100	125	65(80)	65(100)
	冷却水耗量 Cooling Water Consumption		kg/h	2000	3000	4000	1500	2000
电机 Motor	功率 Power	标准工况 Standard Condition	kW	95	132	190	70	132
		空调工况 Air Conditioning Condition	kW	132	190	250		
	电压 Voltage	标准工况 Standard Condition	V	380				380
		空调工况 Air Conditioning Condition	V	380				
	转数 Revolution	标准工况 Standard Condition	r/min	750				750
		空调工况 Air Conditioning Condition	r/min	750				
外型尺寸(长X宽X高) Outline (LXWXH)		标准工况 Standard Condition	mm	2730x1273x1653	2923x1465x1939	3074x1550x1971	2586x1579x1721	2901x1546x1816
		空调工况 Air Conditioning Condition	mm	2781x1273x1653	3023x1465x1939	3144x1550x1971		
机组重量 Unit Weight		标准工况 Standard Condition	kg	5080	5500	6040	4320	5850
		空调工况 Air Conditioning Condition	kg	5160	5570	6190		

注:
1. 适用条件: 单级: 最高排气压力 ≤ 1.5MPa, 最高排气温度 ≤ 150℃, 最大压差 ≤ 1.4MPa;
双级: 低压机, 最高排气压力 ≤ 0.7MPa, 最高排气温度 ≤ 120℃, 最大压差 ≤ 0.8MPa; 高压
级, 最高排气压力 ≤ 1.5MPa, 最高排气温度 ≤ 150℃, 最大压差 ≤ 1.4MPa
2. 括号内数据为低压机参数
3. 标准工况: -15℃/+30℃, 空调工况: +5℃/+40℃

Note:
1. Conditions: Single-stage: the maximum discharge pressure ≤ 1.5MPa, the maximum
discharge temperature ≤ 150℃, the maximum pressure ≤ 1.4MPa; two-stage: Low stage, the
maximum discharge pressure ≤ 0.7MPa, Maximum discharge temperature ≤ 120℃, the
maximum pressure ≤ 0.8MPa; High stage, the maximum discharge pressure ≤ 1.5MPa, the
maximum discharge temperature ≤ 150℃, the maximum pressure ≤ 1.4MPa
2. Data in parentheses are the low stage parameters
3. Standard condition: -15℃/+30℃, Air conditioning condition: +5℃/+40℃

LG系列螺杆制冷压缩机组

LG Series Screw Compressor Unit

能力范围 Scope

制冷量 | Refrigeration Capacity 148~2636 kW (-15°C/+30°C)

应用领域 Application

广泛应用于食品冷冻冷藏、水产、商业、石油、化工、煤炭、纺织、医药、造船、国防和科研等需要人工制冷的各个方面。

Widely used in food refrigeration and freezing, aquaculture, commercial, petroleum, chemical industry, coal, textiles, pharmaceuticals, shipbuilding, defense and scientific research in all aspects of needs artificial refrigeration.



产品特性 Features

■ 高可靠性

- 滑动轴承，运转寿命长
- 易损件少，运转平稳，适合长期运行

■ 高效性

- 排气温度低，容积效率较高
- 国际领先的螺杆压缩机转子型线，效率高
- 能量无级调节

■ 智能化

- 手动和微电脑全自动控制两种控制方式
- 专用微电脑控制器，速度快，控制功能强，实现了模块化、网络化

High Reliability

- * Sliding bearing, long operating life one chiller, which can
- * Less wearing parts, smooth operation, suitable for long-term operation

High efficiency

- * Low exhaust temperature, high volumetric efficiency
- * World's leading screw compressor rotor profile, high efficiency
- * Energy stepless adjustment

Intellectualized

- * Manual control and microcomputer automatic control
- * Have features of fast running speed, strong control capability. And realize modularization and networking

LG系列螺杆制冷压缩机组技术参数表

LG Series Screw Compressor Unit Technology Parameter Table

机组型号 Unit Model LG		12.5	12.5F	16	16F	20	20F	25	25F	31.5	31.5F	
制冷剂 Refrigerant		R717	R22	R717	R22	R717	R22	R717	R22	R717	R22	
机组 Unit	制冷量 Refrigeration Capacity	空调工况 Air Conditioning Condition	307.1	278.2	650.5	591.2	1385.2	1258.9	2760.4	2508.4	5431.6	4935.8
		标准工况 Standard Condition	148.1	147.9	315.7	314.3	672.3	669.3	1339.9	1333.7	2636.5	2624.4
		低温工况 Low Temperature Condition	53.4	56.9	113.5	121	242.3	258.2	483.3	515.2	951.3	1014
		低温工况带经济器 Low Temp. Cond. With Economizer	63.8	75.3	135.7	159.7	289.4	340.2	577.3	677	1136.5	1339.4
	轴功率 Shaft Power	空调工况 Air Conditioning Condition	55.3	52.7	116.5	111	245.2	233.5	487.7	464.4	959.1	913.2
		标准工况 Standard Condition	39.5	41.1	83.2	86.6	175.1	182.2	348.3	362.3	584.9	712.5
		低温工况 Low Temperature Condition	34.8	36.9	73.1	77.6	153.5	163.1	305.6	324.6	601	638.4
		低温工况带经济器 Low Temp. Cond. With Economizer	35.5	39.5	74.6	83	156.5	174.1	308.8	343.3	606.1	675.2
	吸气管管径 Suction Pipe Diameter		mm		100		150		200		300	
	排气管管径 Exhaust Pipe Diameter		mm		65		100		150		200	
	机组外形尺寸(长X宽X高) Outline (LXWXH)		mm		2770x1200x1850		2965x1355x1920		3610x1520x2280		4855x1975x3070	
	重量(约) Weight (About)	空调工况 Air Conditioning Condition	kg	2240	2860		5850		11000		17200	
标准工况 Standard Condition		2920			5690		10900		16600			
低温工况 Low Temperature Condition		5620										
压缩机 Compressor	理论输气量 Theory Gas Transmission Rate	m ³ /h	276	580	1215	2395	4700					
	能量调节范围 Energy Adjustment Scope	%	10—100 无级调节 Stepless adjustment									
主电动机 Main Motor	额定功率 Rated Power	空调工况 Air Conditioning Condition	65	125	250	560	1250					
		标准工况 Standard Condition	55	100	220		450		900			
		低温工况 Low Temperature Condition			200							
电制 Power Standard		3P, 50Hz, 380V				3P, 50Hz, 380V/6kV/10kV						
油泵 Oil Pump	电动机功率 Motor Power	kW	2.2	3			5.5	11				
油冷却器 Oil Cooler	水冷 Water-Cooled	进水温度 Water Inlet Temp.	≤32									
		进/出水管径 Inlet/Outlet Water Pipe Diameter	mm	32	32	65	65	100				
		最大循环水量 The Largest Circulating Water	m ³ /h	7	5	12	8	25	17	51	35	97
	工质冷 Refrigerant-Cooled	进液口管径 Inlet Pipe Diameter	mm	20	32			40		65		
		出气口管径 Outlet Pipe Diameter	mm	32	50			65		100		

注：
1. 机组使用条件：蒸发温度：-40℃~+5℃，冷凝温度≤+43℃，排气温度≤+105℃，喷油温度：+25℃~+65℃，油压高于排压：0.15~0.3MPa
2. 空调工况：+5℃/+40℃，标准工况：-15℃/+30℃，低温工况：-35℃/+35℃

Note:
Condition: Evap. temp: -40 °C ~ +5 °C, Cond. temp. ≤ +43 °C, Exhaust temp. ≤ +105 °C, Oil injection temp.: +25 °C ~ +65 °C, oil pressure higher than discharge pressure: 0.15 ~ 0.3MPa
Air conditioning condition: +5 °C / +40 °C, Standard conditions: -15 °C / +30 °C, low temperature condition: -35 °C / +35 °C

船用活塞式制冷压缩机

Marine Reciprocating Refrigeration Compressor Unit

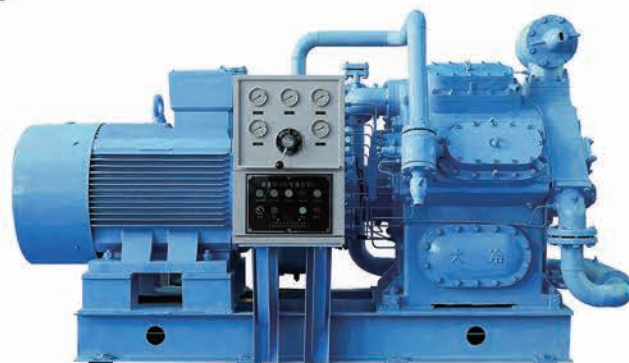
能力范围 Scope

制冷量 | Refrigeration Capacity 18-169 kW

应用领域 Application

广泛应用于船上食品保鲜、冷藏、速冻、低温加工、船舶空气调节等。如金枪鱼钓船、大型鱿鱼钓船、大型远洋围网、拖网加工船等

This series unit is widely applied in ship of food preservation, refrigerated, frozen, low temperature processing, marine air conditioning etc. Such as tuna fishing boat, a large squid fishing boats, large ocean seine, trawl processing vessels etc.



产品特性 Features

- 压缩机有单级、单级双级和超低温三种机型，均属高速、多缸、逆流式压缩机
- 设有能量调节装置，可实现无负荷启动
- 压缩机设有装放油阀，可在运转中加油
- 三种机型的关键零部件均采用进口件

* Marine reciprocating compressor unit include three types, single-stage, single unit dual-stage and super-low temp. All of them belong to high speed, multi-cylinder and counterflow type compressor.

* The unit is equipped with capacity adjustment device to realize no load starting.

* The unit is equipped with oil charge/discharge valve to make it possible to charge lubrication oil in running condition.

* The critical components of these three type of unit are imported.

技术参数表

Technology Parameter Table

机组型号 Unit Model	制冷剂 Refrigerant	工况 Condition	机组制冷量 Ref. Cap.	蒸发温度范围 Evaporative Range	压缩机理论 输气量 Theoretical Volume	电制 Power	电机功率 Motor Power	压缩机转数 Revolution	备注 Remark
		℃	kW	℃	m ³ /h		kW	r/min	
CYF2F ₂ Z10	R22	-15/30	25.6	-30~10	63.3	220V/50HZ	13	960	
CYF4F ₂ V10			52.3	-30~10	126.6		22	960	
CYF6F ₂ W10			81.4	-30~10	190		37	960	
CYF8F ₂ S10			104	-30~10	253.3		45	960	
CYF4F ₂ SJ10		-35/35	18.3	-75	高压HP 31.65 低压LP 94.95		18.5	960	装有中间冷却器 With intercooler
YF ₁ 8F ₂ SJ10			36.6	-75	高压HP 63.3 低压LP 190		30	960	装有中间冷却器 With intercooler
CJZT810C	R22	-35/35	54.4	-50~25	高压HP90.4 低压LP 272	220V/50HZ 380V/50HZ	37	960	装有直接式冷却器 With direct-cooler
CYF612.5		-15/30	169.3	-30~10	高压HP141 低压LP 424		75	960	装有中间冷却器 With intercooler
CJZS812.5		-35/35	93.31	-75	高压HP141 低压LP 424		75	960	装有直接式冷却器 With direct-cooler
CJZS812.5C			102.64	-75	高压HP 155 低压LP 466		75	960	装有直接式冷却器 With direct-cooler
CJZS812.5CDW			R22	-60/35	29.1		-115	高压HP 155 低压LP 466	220V/50HZ 380V/50HZ

注：
1. 不带经济器时，机组型号中第一个J省略
2. 冷凝温度范围 ≤ 40° C
3. 以上所有设备根据实际工况非标定制

Note:
1. Without economizer, the first J in the unit model is omitted
2. Condensing Temp: ≤ 40°C.
3. All above equipment can be customized design as per actual requirement.

船用螺杆式制冷压缩机

Marine Screw Refrigeration Compressor Unit

能力范围 Scope

制冷量 | Refrigeration Capacity 57-330 kW

应用领域 Application

广泛应用于制冷量需求较大的船上食品保鲜、冷藏、速冻、低温加工、船舶空气调节等。如金枪鱼钓船、大型鱿鱼钓船、大型远洋围网、拖网加工船等

This series unit is widely applied in ship, has a greater demand cooling capacity, for food preservation, refrigerated, frozen, low temperature processing, marine air conditioning etc. Such as tuna fishing boat, a large squid fishing boats, large ocean seine, trawl processing vessels etc.



产品特性 Features

- 效率高
 - 具有国际先进水平的第四代高效转子型线，由先进的HOLROYD 专用转子床加工，保证最精确的加工尺寸和最高的工作效率
 - 阴阳转子外径尺寸相同，圆周速度趋于最佳值，压缩机效率明显提高
 - 油泵连续供油，使压缩过程更接近等温压缩过程，润滑油在各密封线上形成油膜，内泄漏最少，容积效率高
 - 高效油分离器和冷却器，确保机组低油耗和高换热效率
- 可靠性高、寿命长、减震降噪好
 - 转子型线采用双边非对称圆弧摆线齿形，并带有密封筋，提高了压缩机运转的可靠性
 - 转子采用球墨铸铁代替钢制材料，其耐磨性、自润滑性、吸音性、减振性大大提高
 - 特制的机械密封，优越的密封性能
 - 进口高质量的滚动轴承承受转子轴向力，运转寿命40000小时以上；滑动轴承承受径向力，运转寿命达80000小时以上
 - 机组结构紧凑、布局合理、重心低、运行可靠
 - 全部采用钢制阀门
 - 合理的机组重心和地脚螺栓位置，进一步降低了振动和噪音
- 管路简洁、性能稳定
 - 在油管路上增设恒压阀，使供油压力稳定，提高了整机的使用性能
 - 机组管路系统布置简洁、操作简单

High-efficiency

* The 4th generation high-performance rotor profile with international advanced level. Being processed by advanced HOLROYD exclusive rotor grinding machine to ensure the most accurate precision and high efficiency.
 * The outside diameter of the male rotor and female rotor is equal, the circumferential velocity tends to the optimal value, the compressor efficiency improved significantly.
 * Oil pump supplies oil continuously and make compression process close to no temp change. Lubrication oil forms a film on the seal line to reduce inner leakage and increase volume ratio.
 * High-efficient oil separator and oil cooler ensure low oil consumption and high heat transfer efficiency.

High Reliability, Long Running Life, Good Vibration and Noise Reduction

* Rotor profile with feature of bilateral asymmetric are cycloidal, and with sealing ribs, to improve the reliability of operation of the compressor.
 * Apply ductile iron replace steel. Its wear resistance, self-lubrication, sound insulation, and vibration damping are greatly improved.
 * Apply imported mechanical seal, superior sealing performance.
 * Apply high quality roller bearing take axial force from rotor, can run over 40000hours. Sliding bearing take radial force, can run over 80000hours.
 * Compact unit, reasonable layout, low gravity center, reliable operating.
 * All using steel valves.
 * Reasonable center of gravity and anchor bolt location optimize unit vibration and noise.

Compact Piping, Stable Performance

* Add constant pressure valve in oil pipe, stability the oil supply pressure, improve the performance of the machine.
 * Simple piping layout and easy to operate.

技术参数表

Technology Parameter Table

项目 Item	单位 unit	立式油分离器制冷机组 Vertical oil separator of refrigerant unit			卧式油分离器制冷机组 Horizontal oil separator of refrigerant unit			
		CJJZKF ₂ 12.5	CJJZKF ₂ 16	CJJZKF ₂ 20	CJJZLG12.5F	CJJZLG16F	CJJZLG20F	
机组型号 Unit Model		CJJZKF ₂ 12.5	CJJZKF ₂ 16	CJJZKF ₂ 20	CJJZLG12.5F	CJJZLG16F	CJJZLG20F	
制冷剂种类 Refrigerant		R22			R22			
工况 Condition	℃	-35/35			-35/35			
机组制冷量 Ref. Cap	不带经济器 Without Economizer	kW	57	121.6	259	57	121.6	259
	带经济器 With Economizer	kW	75.2	154.7	329.6	75.2	154.7	329.6
蒸发温度范围 Evaporative Range	不带经济器 Without Economizer	℃	-40 ~ +5			-40 ~ +5		
	带经济器 With Economizer	℃	-40 ~ -10			-40 ~ -10		
压缩机 Compressor	理论输气量 Theoretical Volume	m ³ /h	276	580	1215	276	580	1215
	制冷量调节范围 Capacity adjustable range		10% ~ 100%			10% ~ 100%		
主电动机 Main Motor	电制 Power		3P,50Hz,380V			3P,50Hz,380V		
	额定转速 Rated revolution	r/min	2960			2960		
	功率 Power	kW	55	110	200	55	110	200
轴功率 Shaft Power	不带经济器 Without Economizer	kW	36.5	76.8	161.4	36.5	76.8	161.4
	带经济器 With Economizer	kW	39.7	86.1	180.9	39.7	86.1	180.9
冷却水进口温度 Cooling water temp, in	℃	≤33			≤33			
油冷却器 Oil Cooler	进水温度 Temp, in	℃	≤33			≤33		
	最大循环水量 Max. circulating-water	m ³ /h	7	8	17	7	8	17
机组重量 Unit Weight	不带经济器 Without Economizer	kg	2900	3720	6640	-	2190	5160
	带经济器 With Economizer	kg	3150	3960	6920	-	3650	5420
外型尺寸(长x宽x高) Outline (LxWxH)	不带经济器 Without Economizer	mm		3300x1550 x1895	4000x1700 x2540		2850x1280 x1900	3100x1385 x2125
	带经济器 With Economizer	mm	2930x1550 x1900	3500x1568 x1895	4000x1700 x2540		2850x1280 x1900	3100x1415 x2125

注:

1. 不带经济器时，机组型号中第一个J省略
2. 冷凝温度范围≤40℃
3. 以上所有设备根据实际工况非标定制

Note:

1. Without economizer, the first J in the unit model is omitted.
2. Condensing Temp: ≤ 40℃.
3. All above equipment can be customized design as per actual requirement.

制冰成套设备系列

Complete-set Block Ice making Equipment

能力范围 Scope

制冰能力 Capacity	3~240t/24h
-----------------	------------

应用领域 Application

广泛适用于各类水产品的冷冻、冷藏等领域。

Ice making plant is widely used for seafood freezing and refrigeration.



产品特性 Features

■ 配套齐全

配有氨压缩机组、配套辅机制冰间设备、起吊设备等，操作简便可靠。

■ 冰块规格多样

冰块有25kg、50kg、135kg三种规格，按冰质有透明冰和白冰两种。

■ 机组性能可靠

选用的氨压缩机组转速高、体积小、重量轻，效率高，占地面积小。

Complete equipments

*Including ammonia refrigeration compressor, accessories and components to be matched to the range of plants, equipments to be mounted in ice making shop, and lifting equipments, Easy to operation

Various specification

*Available in production for ice of two forms, transparent ice and white ice, which can be divided into three specifications, 25kg, 50kg and 135kg.

High running reliability

*Adopt ammonia refrigeration compressor, high revolution, small volume, light weight, high efficient and saving space

制冰成套设备主要技术参数表

Specification of Block Ice making Plant Technology Parameter Table

基本参数 Parameter	单重 Unit Weight (Kg)	制冰能力 Ice Making Capacity										
		3 tons/24h	5 tons/24h	10 tons/24h	15 tons/24h	20 tons/24h	30 tons/24h	60 tons/24h	120 tons/24h	180 tons/24h	240 tons/24h	
冰块重量 Weight of Ice Block	kg	25		50				135				
结冰时间 Freezing Time	h	12		24				48				
制冰间面积 Area Of Ice Making Shop	m ²	44	52	112	133	154	196	360	720	1080	1040	
贮冰库面积 Ice Storage Area	5 日 Days	m ²	8	13	25	40	50	75	150	300	450	600
	15 日 Days	m ²	24	40	75	120	150	230	450	900	1350	1800
	30 日 Days	m ²	48	80	150	240	300	450	900	1800	2700	3600
总供电容量 Total Power	kW	23	38	54	79	100	147	241	482	740	964	
冷凝器耗水量 Water Consumption of Condenser	t/h	7	14	26	80	105	160	260	520	780	1040	
制冰用原料水量 Water Consumption for Ice Making	t/24h	3	5	10	15	20	30	60	120	180	240	

片冰机 Flake Ice Machine

能力范围 Scope

制冰能力 Capacity	3~50 tons/24h
-----------------	---------------

应用领域 Application

- Supermarket Fresh and Hotels Chilled
- 商超、酒店冷藏
- Slaughtering Industry
- 屠宰行业
- Food Processing
- 食品加工
- Fruit, Vegetables Distribution and Preservation
- 水果、蔬菜的配送和保鲜
- Concrete Mixing Works
- 混凝土搅拌工程
- Pharmaceutical/Chemical Paint
- 制药/化工涂料



产品特性 Features

- 采用来自欧美高效、节能、绿色的换热技术。
- 我们是唯一一家使用该技术的工厂。与传统翅片冷凝器的比较;该冷凝器节省58%的制冷剂, 减少29%的能耗, 提高38%的换热性能;
- 高防腐性能, 适用于新型制冷剂, 满足节能环保要求。片冰干燥光滑, 边缘不明显, 不会损坏冷冻物品。

Used efficient, energy-saving and green heat exchanger from Europe and American TECH.

* This factory is the only factory to use the TECH in China. Compared with the traditional finned condenser; the condenser save 58% refrigerant, reduce 29% energy dissipation, improve 38% heat-exchanging performance; be of high level anti-corrosion, be suit for new refrigerant and meet energy saving and green requests.

Flake ice has dry smooth, not abvious edges thus will not damage the freezer goods.

片冰机主要技术参数表

Specification of Flake Ice Machine Technology Parameter Table

型号	日产量		制冷量	功率	冷却方式	外形尺寸		Weight(kg) (exclude bin)
	Daily output (kg/24h)	Bin capacity (kg)				Unit dimension (L*W*H/mm)	Bin size (L*W*H/mm)	
ZLF035	350	200	1961	2.4	Air Cooling	1142*740*760	1050*970*900	170
ZLF04	400	300	2241	2.4	Air Cooling	1225*740*760	1135*1030*1050	190
ZLF05	500	300	2801	2.4	Air Cooling	1225*740*760	1135*1030*1050	190
ZLF06	600	300	3362	2.9	Air Cooling	1225*740*760	1135*1030*1050	191
ZLF08	800	300	4482	3.4	Air Cooling	1225*740*865	1135*1030*1050	193
ZLF10	1000	300	5603	4	Air Cooling	1225*740*920	1135*1030*1050	197
ZLF12	1200	400	6724	4.8	Air Cooling	1410*870*920	1320*980*1200	302
ZLF15	1500	400	8405	6.2	Air Cooling	1410*870*1005	1320*980*1200	322
ZLF20	2000	500	11206	7.7	Air Cooling	1604*1100*1065	1510*1100*1300	397
ZLF25	2500	500	13541	8.8	Air Cooling	1610*1100*1305	1510*1100*1300	491
ZLF30	3000	1500	16810	11.2	Water Cooling	1510*1100*1277	1800*1500*2000	585
ZLF40	4000	2000	22413	16.2	Water Cooling	2040*1600*1321	* Based on customers' demands	970
ZLF50	5000	2000	28017	18.5	Water Cooling	2240*1600*1520		1070
ZLF80	8000	4000	44827	31.4	Water Cooling	2700*2018*1525		1890
ZLF100	10000	5000	56034	38.2	Water Cooling	2720*1882*1615		1970
ZLF120	12000	5000	67241	38.2	Water Cooling	2720*1882*1765		2030
ZLF150	15000	8000	84502	49.2	Water Cooling	4440*2224*1936		2650
ZLF200	20000	10000	112068	60.9	Water Cooling	4440*2200*2260		3210
ZLF250	25000	12000	140086	75.7	Water Cooling	4500*2190*2270		4500
ZLF300	30000	15000	168103	97.8	Water Cooling	4550*2320*2462		5160
ZLF400	40000	20000	224137	124.3	Water Cooling	4550*2320*3000		5500
ZLF500	50000	25000	280172	147.4	Water Cooling	4580*2770*3500	6300	

注:
标准条件: 环境温度25℃, 水温16℃
以上参数如有变更, 恕不另行通知。

Note:
Standard condition: ambient temperature 25℃, water temperatures 16℃
The above-mentioned parameter will be changed subject to technical innovation without further notice.

管冰机

Tube Ice Machine

能力范围 Scope

制冰能力 Capacity	1~70 tons/24h
-----------------	---------------

应用领域 Application

- 食用冰厂
Edible ice factory
- 港口冰厂
Port ice plant
- 咖啡厅、酒吧和酒店等
Coffee shop, bar, and hotel, etc
- 超市、便利店和餐厅等
Supermarket, convenience shop and restaurant, etc
- 水产品食品保鲜
Aquatic products and food fresh preservation
- 物流保鲜
Logistic fresh preservation

产品特性 Features

- 特殊的制冰方法，去除水中的杂质，冰块硬。
 - 管冰呈中空管状，透明、卫生、环保
 - 多种尺寸供您选择。外径：φ22、φ29、φ38、φ41mm，可根据您的要求定制。
 - 适用于储存和运输，适用于多种领域。
- * Special ice making method to remove water impurity. The ice is hard and powder less
- * The tube ice, in hollow tube shape, is transparent, sanitary and environment friendly
- * Several dimensions for your option. Outer diameter: φ22, φ29, φ38, φ41mm and custom to your requirement.
- * Suitable for storing and transporting, and applicable for several fields.



制冰成套设备主要技术参数表

Specification of Block Ice making Plant Technology Parameter Table

型号 Model	产量 capacity φ22 (Tons/day)	产量 capacity φ29 (Tons/day)	产量 capacity φ38 (Tons/day)	所需制冷量 Necessary Refrigeration Capacity(kW)	压缩机马力 Compressor Nominal Horsepower	安装电源 Install Power (kW)	运行电源 Running Power (kW)	耗水量 Water Consumption (Tons/hr)	充水量 Water Recharge (Tons/hr)	主轴功率 Main Shaft Power (kW)	水泵功率 Water Pump Power (kW)	运行重量 Running Weight (kg)
ZLT10	1.04	1	0.9	6	6	6.5	4	0.046	-	0.25	0.25	1240
ZLT30	3.12	3	2.7	18	15	15	9	0.138	0.2	0.37	0.55	2000
ZLT50	5.2	5	4.5	30	25	25	16	0.230	0.3	0.55	0.75	3500
ZLT100	10.4	10	9	60	50	46	32	0.460	0.6	0.75	1.5	4500
ZLT150	15.6	15	13.5	90	70	65	45	0.690	1	1.1	2.2	7000
ZLT200	20.8	20	18	120	100	85	64	0.920	1	2.2	2.2	10000
ZLT250	26	25	22.5	150	120	105	80	1.150	1.3	2.2	2.2	11500
ZLT300	31.2	30	27	180	150	125	96	1.380	1.6	2.2	2.2	13000
ZLT400	41.6	40	36	240	200	165	125	1.840	2	3	3	15000
ZLT500	52	50	45	300	250	200	150	2.300	2.5	4	4	17000
ZLT700	72.8	70	68	420	350	260	210	3.220	3.5	5.5	5.5	20000

注：
环境温度：5℃-4℃。供水温度：0.5℃-30℃
φ22、φ29、φ38 标准管冰外径，内径3mm 非标设计。

以上参数如有变更，恕不另行通知。

Note:
Ambient temp.: 5° C - 4° C, water supply: 0.5° C - 30° C.
φ22、φ29、φ38 standard tube ice outer diameter, inner diameter 3mm non-standard design.

The above-mentioned parameter will be changed subject to technical innovation without further notice.

直冷式块冰机

Direct Cooling Ice Block Machine

能力范围 Scope

制冰能力 Capacity	1~25 tons/24h
-----------------	---------------

应用领域 Application

- 港口和码头的制冰厂
Ice factory at ports and docks
- 水产品保鲜冷却
Fresh preservation and cooling of aquatic products
- 运输途中水产品食品的保鲜
Fresh preservation of aquatic products and foods during line haul
- 特定领域的降温降温
Temperature reduction and cooling in specific fields
- 冰雕
Ice sculpture



产品特性 Features

- 采用时间控制、温度控制和定时控制，自动供水，自动脱冰。
- 容量大，冰冻时间快。
- 占地少，移动灵活。
- 操作简单，风险低，成本低。
- 块冰干净卫生，可食用。
- 不加盐水直接蒸发。
- 冰模材质采用铝板，制冰周期短。

- * Adopt time control, temperature control and timer control, automatic water supply, automatic ice-shedding.
- * Large capacity, fast ice freezing time.
- * Occupied less area, flexible moving.
- * Easy operation, low risk, low cost.
- * Block ice is clean and sanitary, and edible.
- * Evaporated directly without salt water.
- * Material of ice moulds use aluminum plate, ice making cycle is short.

直冷式块冰机主要技术参数表

Direct Cooling Ice Block Machine Technology Parameter Table

型号 Model	产量 Capacity (Ton/Day)	制冷量 Ref. capacity (KW)	制冷剂 Refrigerant	额定功率 Rated Power (KW)	额定电流	压缩机功率 Compressor Power (HP)	冰块重量 Weight of Block Ice (Kg)	冰块温度	取冰方式 Ice Harvest Way
ZLZB10	1	7.5	R22/R407	6	11	6	25/50	-8	手动叉车 Manual Forklift
ZLZB20	2	15.6	R22/R407	10	18	10	25/50	-8	手动叉车 Manual Forklift
ZLZB30	3	22.4	R22/R407	14	28	15	25/50	-8	手动叉车 Manual Forklift
ZLZB50	5	43.3	R22/R407	25	36	25	25/50	-8	拉升 Elevating
ZLZB100	10	86.6	R22/R407	50	91.5	50	25/50	-8	拉升 Elevating
ZLZB150	15	118.2	R22/R407	75	140	80	25/50	-8	拉升 Elevating
ZLZB200	20	155.7	R22/R407	105	180	100	25/50	-8	拉升 Elevating
ZLZB250	25	199.2	R22/R407	120	214	120	25/50	-8	拉升 Elevating

冰块重量 Ice Weight	冰模尺寸(mm) Ice Can Size	制冰时间(小时) Freezing Time(hours)	出冰次数/24小时 Ice Making Batch/24hours
5KG	95*130*500	3	8
10KG	95*260*500	3	8
15KG	123*300*500	6	4
	123*215*710	6	4
20KG	123*285*710	6	4
	155*220*710	8	3
25KG	123*350*710	6	4
	155*280*710	8	3
30KG	155*335*710	8	3
50KG	163*405*920	12	2
100KG	230*530*1000	24	1

注：
运行条件：供水温度：20° C，环境温度：25° C；
直冷式块冰机的实际制冰能力会受不同地方供水温度和环境变化的影响；

以上参数如有变更，恕不另行通知。

Note:
*Operation Condition: water supply temperature: 20° C, ambient temperature: 25° C ;
*The actual ice making capacity of Direct cooling ice block machine will be affected by the changes of water supply temperature and ambient in different places ;
*The above-mentioned parameter will be changed subject to technical innovation without further notice.

ZLV蒸发式冷凝器

ZLV Evaporative Condenser

能力范围 Scope

名义排热量 | Heat Rejection 319~1874 kW

应用领域 Application

广泛应用于冷冻冷藏，肉类屠宰、乳制品及冷饮厂、果蔬保鲜及加工、食品速冻、水产品的冷冻冷藏等领域。

Widely used in refrigeration, meat slaughtering, dairy and beverage plants, fresh and processed the fruits and vegetables, frozen food, seafood refrigerated and other fields.



产品特性 Features

- **可靠的性能**
二次换热设计的创新组合维护简便
- **长年高效蒸发式冷凝**
风扇安装在高于喷淋水区域的热气流中
- **不易结垢**
减少维护次数，保持较好换热性能
- **延长维护周期**
采用了不堵塞的进风导风板和易检修的大直径的水喷淋系统
- **宽敞的空间**
容易检修维护风机驱动系统、换热盘管和水盘
- **盘管接头少，制冷剂充注量少，设备重量轻**
减少安装费用

- Reliable Performance**
*Innovative combination of two proven heat transfer designs.
- Efficient year-round Evaporative Condensing**
*Induced-draft fans are mounted in the warm airstream that above the wet areas.
- Low Scaling Tendency**
*Low scaling tendency reduces maintenance requirements and sustains peak performance between service intervals.
- Extended Service Intervals**
*Adopt non-clog, wide-spaced air inlet louvers and accessible large-orifice water distribution system.
- Spacious plenum**
*Easy maintenance of fan drive system, heat transfer oil and cold water basin.
- Fewer coil connections, reduced refrigerant charge, and low unit weights**
*Minimize installation costs.

蒸发式冷凝器主要技术参数表

Evaporative Condenser Technology Parameter Table

型号 ZLV Model Number	标准排热量 kW Base Heat Rejection	重量 (kg) Approx. Weight			风量 m3/s Airflow Rate	风扇电机 kW Fan Motor	水流量 L/S Spray Flowrate	水泵功率 kW Pump Motor	氨充灌量 kg Ammonia Operating Charge	远置蓄水槽 Remoto Sump	
		运输 Shipping	运行 Operating	最重部件 Heaviest Section						排水孔尺寸 Drain Size	运行重量 Approx. Oper.Wt.
ZLV-74	319	2350	3400	1440	12.5	4	12	1.1	30	150	3268
ZLV-80	345	2370	3410	1450	14.3	5.5	12	1.1	30	150	3282
ZLV-84	362	2370	3420	1450	15.7	7.5	12	1.1	30	150	3286
ZLV-89	383	2520	3590	1600	13.9	5.5	12	1.1	38	150	3459
ZLV-93	401	2530	3600	1610	15.3	7.5	12	1.1	38	150	3464
ZLV-117	505	3370	4960	2140	20.0	5.5	18	2.2	46	150	4827
ZLV-123	530	3390	4980	2140	22	7.5	18	2.2	46	150	4832
ZLV-131	564	3410	5000	2160	25.1	11	18	2.2	46	150	4855
ZLV-137	589	3610	5240	2360	21.4	7.5	18	2.2	57	150	5086
ZLV-147	632	3640	5260	2390	24.5	11	18	2.2	57	150	5109
ZLV-153	661	4150	6290	2590	25.6	7.5	32	2.2	61	200	6032
ZLV-164	706	4180	6310	2610	29.2	11	32	2.2	61	200	6059
ZLV-173	744	4190	6320	2620	32.1	15	32	2.2	61	200	6064
ZLV-184	795	4480	6650	2910	28.6	11	32	2.2	76	200	6400
ZLV-193	832	4490	6660	2920	31.4	15	32	2.2	76	200	6409
ZLV-207	892	4560	6970	2830	38	18.5	45	4.0	69	200	6718
ZLV-214	918	4570	6980	2840	40	22.0	45	4.0	69	200	6727
ZLV-229	987	4970	7450	3240	31.7	11	45	4.0	91	200	7191
ZLV-241	1034	4970	7450	3250	34.9	15.0	45	4.0	91	200	7195
ZLV-253	1086	5000	7480	3270	37.6	18.5	45	4.0	91	200	7223
ZLV-258	1112	5010	7490	3280	39.9	22	45	4.0	91	200	7232
ZLV-263	1133	5850	8460	4120	30.5	11	45	4.0	136	200	8201
ZLV-269	1159	5410	7950	3690	33.9	15	45	4.0	114	200	7700
ZLV-277	1195	5870	8480	4140	33.0	15.0	45	4.0	136	200	8221
ZLV-280	1202	5440	7980	3710	36.5	18.5	45	4.0	114	200	7723
ZLV-287	1238	5890	8500	4160	35.4	18.5	45	4.0	136	200	8241
ZLV-288	1241	5450	7990	3720	38.8	22	45	4.0	114	200	7736
ZLV-296	1275	5890	8500	4160	38.1	22	45	4.0	136	200	8241
ZLV-338	1452	7070	10810	4670	47.9	11-5.5	54	5.5	136	200	10555
ZLV-354	1525	7090	10820	4680	52.7	15-7.5	54	5.5	136	200	10568
ZLV-369	1585	7140	10870	4730	56.7	18.5-11	54	5.5	136	200	10618
ZLV-379	1633	7150	10880	4740	60.3	22-11	54	5.5	136	200	10627
ZLV-387	1666	8400	12320	6000	46.8	11-5.5	54	5.5	201	200	12065
ZLV-396	1702	7760	11590	5350	51.2	15-7.5	54	5.5	170	200	11132
ZLV-409	1756	8450	12370	6050	49.7	15-7.5	54	5.5	201	200	12115
ZLV-411	1771	7810	11640	5400	55.1	18.5-11	54	5.5	170	200	11386
ZLV-424	1822	7820	11650	5410	58.6	22-11	54	5.5	170	200	11395
ZLV-428	1839	8490	12410	6090	53.9	18.5-11	54	5.5	201	200	12155
ZLV-435	1874	8490	12410	6090	57.5	22-11	54	5.5	201	200	12155

注：
1. 标准右手型设备指当面对制冷剂接口时，进风口在右侧的机组。左手型设备需要特殊订购。水管接口和水泵循环管路总是在制冷剂接口相同的方向。
2. 标准机组的制冷剂进出口管口已经按焊接的需要进行了缩口，其标准口径为 DN100，其它尺寸管径需要特殊订购。
3. 表中所示的制冷剂充灌量是指在标准运行工况下制冷剂的充灌量；要使用R22 为制冷剂，确定充灌量时请乘以1.93；要R134a作为制冷剂时，确定充灌量时请乘以1.98。
4. 表中运行重量= 整体机组重量+ 制冷剂充灌量+ 水装到底盘溢流水位的重量。

Note:
*The standard right hand arrangement as shown has the air inlet side on the right when facing the refrigerant connection end. Left hand can be furnished by special order. Water and refrigerant connections and pump piping are always on the same end of the unit.
*Standard refrigerant inlet and outlet connections are beveled for welding and have a diameter DN100. Other connection size are available on special order.
*Refrigerant charge listed is R717 operating charge. To determine operating charge for R22, multiply charge by 1.93 and for R134a by 1.98.
*Operating weight shown in the table is based on total unit weight, weight of refrigerant operating charge and basin filled to overflow level.

ZLC 蒸发式冷凝器

ZLC Evaporative Condenser

能力范围 Scope

名义排热量 | Heat Rejection 600~2600 kW

应用领域 Application

广泛应用于冷冻冷藏，肉类屠宰、乳制品及冷饮厂、果蔬保鲜及加工、食品速冻、水产品的冷冻冷藏等领域。

Widely used in refrigeration, meat slaughtering, dairy and beverage plants, fresh and processed the fruits and vegetables, frozen food, seafood refrigerated and other fields.



产品特性 Features

- 结构设计优化，模块化设计
- 高耐腐蚀性设计
- 噪声小
- 能耗低
- 维修、保养方便
- 初期投资少
- 运行费用低

- *Optimized structure design, modular design
- *High corrosion resistance design
- *Low noise
- *Low energy consumption
- *Easy to repair and maintain
- *Low initial investment
- *Low operating costs

ZLC 蒸发式冷凝器主要技术参数表

ZLC Evaporative Condenser Technology Parameter Table

型号 Model	标准排热量 Nominal Heat Rejection kW	风量 Airflow Rate m ³ /h	风扇电机 Fan Motor Kw	水流量 Spray Flowrate m ³ /h	水泵功率 Pump Motor kW	外形尺寸 Outer Dimension			重量 Approx Weight Kg	
						L (mm)	W(mm)	H (mm)	运输 Shipping	运行 Operating
ZLC-600	600	40000	4	114	3.7	2370	2200	3050	3340	4950
ZLC-660	660	50000	4	114	3.7	2460	2200	3050	3420	5060
ZLC-700	700	50000	4	114	3.7	2520	2200	3050	3550	5200
ZLC-820	820	60000	4	114	3.7	2700	2200	3050	3820	5800
ZLC-920	920	60000	2.2*2	130	3.7	3000	2200	3050	4120	6100
ZLC-1020	1020	60000	2.2*2	130	3.7	3300	2200	3050	4500	6600
ZLC-1070	1070	80000	4.0*2	130	3.7	3470	2200	3050	4800	7300
ZLC-1200	1200	120000	4.0*2	130	3.7	3850	2200	3050	5200	7790
ZLC-1250	1250	120000	4.0*2	130	3.7	4000	2200	3050	5320	7850
ZLC-1350	1350	120000	4.0*2	170	3.7	4140	2200	3050	5560	7950
ZLC-1400	1400	120000	4.0*2	170	3.7	4290	2200	3050	5900	8150
ZLC-1500	1500	120000	4.0*2	170	3.7	4590	2200	3050	6200	8580
ZLC-1650	1650	120000	4.0*2	170	3.7	5040	2200	3050	6400	8780
ZLC-1800	1800	150000	5.5*2	170	3.7	5490	2200	3050	7000	9280
ZLC-1900	1900	150000	5.5*2	170	3.7	5790	2200	3050	7300	9880
ZLC-2000	2000	150000	5.5*2	170	3.7	6090	2200	3050	7800	10280
ZLC-2100	2100	180000	7.5*2	190	5.5	4700	2200	3690	8300	10500
ZLC-2200	2200	180000	7.5*3	190	5.5	4800	2200	3690	8900	10800
ZLC-2300	2300	180000	7.5*4	190	5.5	4900	2200	3690	9300	11000
ZLC-2400	2400	180000	7.5*5	190	5.5	5000	2200	3690	10200	12800
ZLC-2600	2600	180000	7.5*6	190	5.5	5200	2200	3690	10800	13400

注：
轴流风机在运输的时候可以拆卸，轴流风机高度为530mm，此外尺寸里的设备高度包括轴流风机的高度。

Note:
*The axial fan can be disassembled during transportation. The height of the axial fan is 530mm. The height of the equipment in this dimension includes the height of the axial fan.

真空冷冻干燥设备

Vacuum Freeze-drying Equipment

能力范围 Scope

标准处理量 | Capacity 2-200 kg/h

应用领域 Application

真空冷冻干燥简称冻干,是最先进的食品干燥技术,广泛应用于蔬菜、水果、肉类、海珍品、乳制品、汤料和保健品等加工生产。

The freeze-drying is short for freeze dryer which is the most advanced food drying technology, and widely used in vegetable, fruit, meat, marine products, dairy products, soup and health care products and some other processing products.

产品特性 Features

■ 加工工艺最优化

- 依据原料特点和用户要求,优化工艺流程
- 提供质量保证体系、检验检测方法、卫生标准等冻干工厂运营 管理方面的技术支持
- 确保最大限度地保留营养成分,保持原有形状和颜色,保质期长, 携带及食用方便

■ 产品多样性,系统高效性

- 固体冻干工程,针对物料多样性、季节性,实现一个冻干工程 的多用途。具有较高的生产效率,节省时间,降低能耗
- 流体冻干工程,有效解决了流体物料运输、装料的均一性,避免二次污染、交差污染,能够实现整套系统CIP清洗
- 功能性产品冻干工程,保护物料中活性组分或防止材料粒子聚集

■ 结构科学合理

- 系统由冻干机、真空系统、加热系统、制冷系统、除霜系统、 输运系统、气动系统和电控系统等组成
- 不锈钢干燥仓壳体,卫生耐用;铝合金加热板和冷阱,表面阳极氧化
- 双仓门设计,进料侧为气动平移式仓门
- 后置式冷阱,卫生、易于维护
- 具有发明专利的加热流道布置方式,温度场均一、高精度控温、加热效率高
- 创新型铝制板式蒸发器,换热效率高,双冷阱捕水系统符合工 艺状态
- 物料输送可选择地轨或吊轨,推荐采用灵活、安全、便捷的新 型地轨运输方式
- 制冷系统可选择氨(R717)或氟里昂(R22、R404A或R507)制冷剂
- 提供干燥仓在位清洗(CIP)、自动装托盘装置
- 符合GMP要求



Process Optimization

- * Optimize the technical process according to the material quality and the requirements of customers.
- * Provide operation management technical support for freeze-drying plant, like the quality assurance system, inspection method, health standard and so on.
- * Ensure to keep nutrient in maximum, Keep original shape and color, shelf life is long, convenient to carry and eat.

Product diversity, system high efficiency

- * Solid freeze-drying engineering, achieves the multiple function of freeze-drying process for seasonality and diversity of products. Which enjoy the high production efficiency, time saving and energy consumption reduction.
- * Fluid freeze-drying engineering effectively addresses the matters of uniformity of fluid material transportation and loading, avoid second pollution and cross contamination, and can achieve the CIP cleaning for the complete system.
- * Functional products freeze-drying engineering could protect the active components in the material or avoid the aggregation of material particles.

技术参数表

Technology Parameter Table

参数 parameters		ZLD02	ZLD5	ZLD10	ZLD25	ZLD50	ZLD75	ZLD100	ZLD125	ZLD150	ZLD200
型号 Mode											
托盘面积 Trays area	m ²	0.25	5	10	25	50	75	100	125	150	200
最大捕水能力 Largest capability of catching water	kg/h	0.5	10	20	50	100	150	200	250	300	400
最大捕水量 Largest quantity of catching water	kg/次 kg/time	3	60	120	240	600	900	1200	1500	1800	2400
加热板工作温度 Heating plate working temperature	°C	5 ~ 125									
干燥仓工作压力 Drying chamber working pressure	Pa	13~133Pa									
干燥仓静态极限真空 Ultimate vacuum of drying chamber	Pa	≤ 10									
抽真空时间(常压到133Pa) Vacuum pumping time	min	≤ 10		≤ 12			≤ 15				
冷阱蒸发温度 Evaporative temperature of cold trap	°C	-50 ~ -30									
制冷能力 Refrigeration capacity	kW	0.4	8	16	32	80	120	160	200	240	320
最大蒸汽耗量(0.7MPa) Maximum vapor consumption	kg/h		12	24	48	120	180	240	300	360	480
装机功率(不含制冷系统) Installation power (Exclude refrigeration system)	kW	2	8	15	30	55	70	80	95	105	120

注: 经济组合可以采取2x, 4x或6x等多种组合型式。

Note: * Economic combination: 2x, 4x or 6x etc.

Scientific And Reasonable Composition

- * The system consist of freeze-drying machine, vacuum system, heating system, refrigeration system, defrost system, transport system, pneumatic system and electric control system.
- * Stainless steel drying bin shell is used which is hygiene and durable. Aluminum alloy heating plate and cold trap is anodizing on the surface.
- * Double chamber door, and pneumatic translating chamber door is set at the feed end.
- * Rear-mounted cold trap is hygiene and easy to maintain.
- * Possess patented heat flow arrangement with characters of even temperature, precise temperature controlling and high efficiency heating.
- * Innovative Aluminum plate evaporator has character of high efficient heat exchange. And the double cold trap capture water systems conform to the process state.
- * The ground track or mounting track can be selected to transport the material, the newly style ground track with the character of flexibility, safety and convenient is recommended.
- * The ammonia (R717) or Freon (R22, R404A or R507) are optional as the refrigerant for the refrigerating system.
- * Provide the cleaning in position and automatic handling pallets device for the drying bin.
- * Meet requirement of GMP.

螺旋速冻机

Spiral Freezer

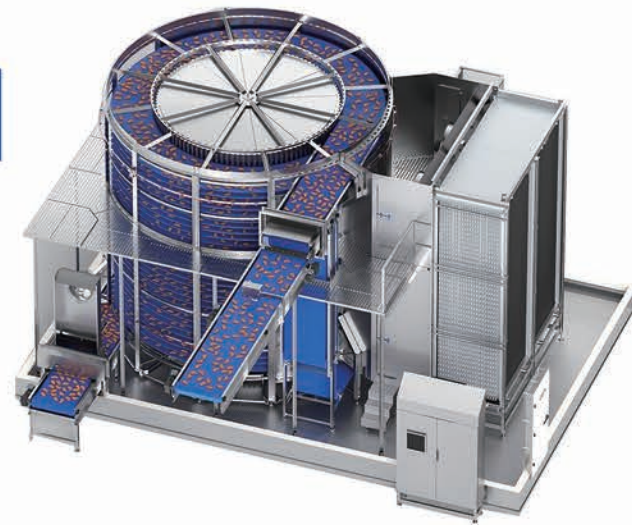
能力范围 Scope

产量 Capacity	300kg/h-4000kg/h
输送带宽度 Width of belt	400mm-1067mm

应用领域 Application

螺旋速冻机广泛运用于水产、调理食品、面点、肉类食品、家禽产品以及乳制品、冰淇淋等食品的单体速冻、冷却

Spiral freezer is widely used for individual quick freezing and cooling aquatic food, prepared foods, pastry, meat, poultry, dairy, ice cream, etc.



产品特性 Features

■ 外驱动方式

避免库内产生油污，污染产品

■ 独有的高强度整体底盘技术

稳定、耐用。表面平整。地面倾斜，拐角为缓角，无卫生死角、方便清洗。设有排水槽，排水顺畅彻底

■ 带亲水膜铝片的换热器

杜绝有害氧化铝粉末的产生，不会对食品造成氧化铝粉末污染

■ 自动清洗系统

清洗时间和风干时间可以自由设定，自动运行

■ 独有专利的送风系统

均匀布风，冷却效率高，干耗低

* External Driving

To avoid contaminate food from lubrication oil.

* Unique High Strength integrated floor

Stable, durable and smooth surface. The floor is slope and its corner is low angle, which is easy to clean and no dusty corner. Drainage channel setting make water draining smooth and thoroughly

* Evaporator with epoxy fin

Avoiding food contamination from aluminum oxide powder.

* Auto washing system

Washing time and air drying time can be set and run as you need.

* Unique airflow system

Even air distribution, high efficiency cooling capability and low weight loss

单螺旋速冻机主要技术参数表

Specification of Singal Spiral Freezer Technology Parameter Table

项目 Item 型号 Model	冻结能力 Freezing	配机冷量 Ref. load	装机容量 Motor Power	冻结时间 Freezing time	入料温度 Temp. in	出料温度 Temp. out	库内温度 Chamber Temp.	网带宽度 Belt Width	制冷剂 RFNT	外形尺寸 Outline Dim. (LxWxH)
	kg/h	kW	kW	min	℃	℃	℃	mm		m
RSSP-L650x12-500	500	80	12.5	20-60	50	-18	-35	650	R717	7.8x5.2x3.25
RSSP-L750x18-1000	1000	170	23					750		8x5.7x4.15
RSSP-L864x27-2000	2000	330	44					864		67x9x5.5
RSSP-L1067x27-3000	3000	490	58					1067		11x8.5x5.5
RSSP-L1067x28-4000	4000	640	78					1067		12x9.5x5.65

双螺旋速冻机主要技术参数表

Specification of Double Spiral Freezer Technology Parameter Table

项目 Item 型号 Model	冻结能力 Freezing	配机冷量 Ref. load	装机容量 Motor Power	冻结时间 Freezing time	入料温度 Temp.in	出料温度 Temp.out	库内温度 Chamber Temp.	网带宽度 Belt Width	制冷剂 RFNT	库体外形尺寸 Outline Dim. (LxWxH)
	kg/h	kW	kW	min	℃	℃	℃	mm		m
RSPT-S450x12-500	500	80	16	20-60	50	-18	-35	450	R717	10.38x4.31x3.25
RSPT-L650x9-750	750	125	18					650		12.83x4.8x2.8
RSPT-L650x12-1000	1000	165	22					650		12.83x4.8x3.25
RSPT-L650x18-1500	1500	240	32					650		14x4.8x4.15
RSPT-L750x15-2000	2000	315	43					750		16.1x6x3.7
RSPT-L750x18-2500	2500	400	46					750		16.1x6x4.15
RSPT-L864x19-3500	3500	540	60					864		13x9x4.45

注:

- 常用制冷剂均适用,如R717/R22/CO2
- 上述冻结能力以炸鸡块为例

Note:

- Refrigerant: such as R717, R22, CO2
- Freezing capacity is calculated based on fried chicken.

平板冻结机

Contact Freezer

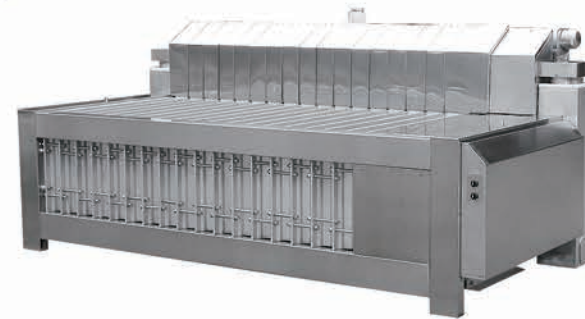
能力范围 Scope

产量 Capacity	300 kg/h-3000 kg/h
输送带宽度 Width of belt	1200 mm-2000 mm

应用领域 Application

平板冻结机适合冷库、水产品 and 肉类加工等行业食品速冻、捕捞渔船及渔业加工船等

Contact freezer is widely applied in cold storage, aquatic foods, meat processing, etc. foods quick freezing industry, fish catching boat and fishery processing industry, etc.



产品特性 Features

- 蒸发器板采用专用的6063铝镁合金型材，重量轻、光洁度高、强度高、导热性好、耐腐蚀性强
- 库板厚度为150mm,表面平整美观，不易变形。无冷桥，不漏冷，不结露
- 进、回液管采用无缝不锈钢金属软管，法兰采用活动式6063 铝合金连接，不易泄露，方便维修
- 门把手、铰链等附件采用精密铸造的 SUS304 不锈钢，美观耐用，不会锈蚀。采用折叠式门，开启灵活，密封性好，不冰冻、不漏气不漏冷。设备两边均可开门，货品进出方便
- 液压油缸经研磨加工，活塞杆表面特殊处理，寿命长，不泄漏。油箱表面喷塑处理，不易锈蚀
- 控制元件采用国内正规厂家产品，性能可靠，故障率低

* Evaporator plate adopt 6063 Aluminium magnesium alloy with features of lighter weight, highly polished surface, higher strength, better thermal conductivity and stronger corrosion resistance.

* The panel thickness is 150mm. And the surface is smoothly and not easy to deformation. No cold-bridge, no leak and no dewing.

* Inlet and return liquid pipe adopt seamless stainless steel hose. And the flange connection adopt active 6063 aluminum alloy to easy maintenance and no leak.

* The doorknob and hinge etc. accessories adopt SUS304 stainless steel. Which are attractive, durable and better corrosion resistance. Adopt folding door for more flexibility, better airtightness, frozen, and less cool leakage. The folding doors are set on both sides to easy loading and unloading.

* The cylinder is grinding and the surface of the piston rod has special treatment to ensure long-term life and no leak. The fuel tank is spraying plastics to ensure it is uneasy to corrode. Adopt trustworthy control element to ensure the high reliability and less fault.

液压平板冻结机主要技术参数表

Specification of Hydraulic Contact Freezer Technology Parameter Table

型号 Type	蒸发器 Evap.Station			冻结量(kg/台.次) Freezing Capacity(kg/ shift/unit)			耗冷量 Ref. Load	外形尺寸 Online Dim. (LxWxH)	重量 Weight
	有效层数 Effective Layer	有效尺寸 Size	蒸发面积 Evap.Area	冻鱼 Fish	冻虾 Shrimp	冻鳙鱼 Codlish			
		mm	m ²				kW	mm	kg
PD0.72-K1	8	1240x1260	31	720	384	-	20	2300x1700x2540	2180
PD0.72-K2								2550x1700x1700	2240
PD1.5-K1	10	2120x1260	62	1500	800	1200	42	3200x1700x2880	3180
PD1.5-K2								3400x1700x2040	3280
PD1.8-K1	12	2120x1260	73	1800	960	1400	50	3200x1700x3210	3580
PD1.8-K2								3400x1700x2320	3680
PD2.4-K1	10	2520x1638	97	2400	1280	-	67	3620x2100x2900	4280
PD2.4-K2								3820x2100x2060	4360

搁架平板冻结机主要技术参数表

Specification of Shelf Flat Plate Freezer Technology Parameter Table

型号 Type	蒸发器 Evap.Station			冻结量(kg/台.次) Freezing Capacity(kg/ shift/unit)		压缩冷凝机组 Freezing Condensing Unit Ref. Capacity		配机功率 Installed Motor Power	外形尺寸 Online Dim. (LxWxH)	重量 Weight
	有效层数 Effective Layer	有效尺寸 Size	蒸发面积 Evap.Area	冻鱼 Fish	冻虾 Shrimp	制冷量 Fish	冷却水量 Shrimp			
		mm	m ²			kW	(m ³ /h)	kW	mm	kg
GDZ1.5-KL	10	2120x1230	135	1500	800	19	24	24	4720x1740x2040	3400
GDZ1.8-KL	10	2520x1230	165	1800	960	32.6	30	39.7	5120x1740x2040	3700
GZD2.1-KL	10	2920x1230	206	2100	1120	32.6	38	39.7	5520x1745x2040	4200
GDG3.15-KL	10	2920x1845	284	3150	1680	53.8	40	48	5520x1745x2040	4800
GDG3.6-KL	10	3400x1845	321	3600	1920	53.8	40	48	5920x1745x2040	5300

注:
1. 常用制冷剂均通用, 如R717/ R22.
2. 保温门为折叠式, 可做滑动式或其他样式.
3. 可根据客户实际需要, 设计各种非标产品

Note:
• Refrigerant: such as R717, R22
• Standard: Folding-type insulation door. Optional: Sliding or others.
• Customized products are available.

隧道速冻机

Tunnel Freezer

能力范围 Scope

产量 Capacity	150 kg/h-3000 kg/h
输送带宽度 Width of belt	1000 mm-5000 mm

应用领域 Application

隧道速冻机广泛运用于水产、调理食品、面点、肉类食品、家禽产品以及果蔬产品食品的单体速冻，冷却

Tunnel freezer is widely used for individual quick freezing of fermenting and cooling bread, freezing seafood, pastry, meat, poultry, vegetables fruit, etc.



产品特性 Features

■ 安全可靠的设备配置

- 采用世界一流水平的关键零部件及电气元件
- 内部架体全部采用不锈钢和进口高分子聚乙烯材料，符合欧盟食品标准

■ 独有的高强度整体底盘技术

- 稳定、耐用，表面平整。地面倾斜，拐角为缓角，无卫生死角、方便清洗
- 设有排水槽，排水顺畅彻底

■ 带亲水膜铝片的换热器

- 杜绝有害氧化铝粉末的产生，不会对食品造成氧化铝粉末污染

■ 送风系统

- 均匀布风，冷却效率高，干耗低

■ 高效的冻结效果

- 另有高效隧道速冻机，冻结时间为普通速冻机的一半

Safe And Reliable Part

- * World class parts and electric components.
- * HACCP standard based on stainless steel and Hygeian PVC

Unique High Strength Integrated Floor

- * Stable, durable and smooth surface. The floor is slope and its corner is low angle, which is easy to clean and no dusty corner.
- * Drainage channel setting make water draining smooth and thoroughly

Evaporator With Epoxy Fin

- * Avoiding food contamination from aluminum oxide power

Airflow System

- * Even air distribution, high efficiency cooling capability and low weight loss

High Efficiency Freezing

- * Optional: High efficiency tunnel freezer with freezing time of that of normal freezer

网带速冻机

Mesh-belt Tunnel Freezer

项目 Item	冻结能力 Freezing	配机冷量 Ref. load	装机容量 Motor Power	冻结时间 Freezing time	入料温度 Temp. in	出料温度 Temp. out	库内温度 Chamber Temp.	制冷剂 RFNT	网带宽度 Belt Width	库体外形尺寸 Online Dim. (LxWxH)
型号 Model	kg/h	kW	kW	min	℃	℃	℃		mm	m
ZLF-150	150	30	12	15-60	50	-18	-35	R717	1000	6.8x2x2.7
ZLF-500	500	85	12						12x2.7x2.7	
ZLF-750	750	115	15						2000	11x3.7x2.7
ZLF-1000	1000	155	20						14x3.7x2.7	
ZLF-1200	1200	180	20						3000	17x3.7x2.7
ZLF-1500	1500	215	30						3200	20x3.75x2.7
ZLF-2000	2000	300	42						4000	21x4.7x2.7
ZLF-3000	3000	400	55						5000	24x5.57x2.7

高效网带速冻机

High Efficiency Mesh-belt Freezer

项目 Item	冻结能力 Freezing	配机冷量 Ref. load	装机容量 Motor Power	冻结时间 Freezing time	入料温度 Temp. in	出料温度 Temp. out	库内温度 Chamber Temp.	制冷剂 RFNT	网带宽度 Belt Width	库体外形尺寸 Online Dim. (LxWxH)
型号 Model	kg/h	kW	kW	min	℃	℃	℃		mm	m
ZLFA-500	500	125	35	10-40	15	-18	-38	R717	2000	12x3.5x3.0
ZLFA-850	800	195	60				-35			21x3.5x3.0

注：1. 常用制冷剂均适用，如 R717/R22/CO2 2. 上述冻结能力以分割鸡块为例

Note: • Refrigerant: R717, R22, CO2 • Freezing capacity is calculated based on chicken cut.

板带速冻机

Plate-belt Tunnel Freezer

项目 Item	冻结能力 Freezing	配机冷量 Ref. load	装机容量 Motor Power	冻结时间 Freezing time	入料温度 Temp. in	出料温度 Temp. out	库内温度 Chamber Temp.	制冷剂 RFNT	网带宽度 Belt Width	库体外形尺寸 Online Dim. (LxWxH)
型号 Model	kg/h	kW	kW	min	℃	℃	℃		mm	m
ZLB-250	250	46	10.5	15-60	15	-18	-35	R717	1200	9x2.3x2.7
ZLB-500	500	80	19.5							20x2.3x2.7
ZLB-600	600	100	20.5							24x2.3x2.7
ZLB-1000	1000	155	43							20x4.5x3.15
ZLB-1250	1250	185	43						1500	20x4.7x3.15
ZLB-1500	1500	210	48							24x4.7x3.15

高效板带速冻机

High Efficiency Plate-belt Tunnel Freezer

项目 Item	冻结能力 Freezing	配机冷量 Ref. load	装机容量 Motor Power	冻结时间 Freezing time	入料温度 Temp. in	出料温度 Temp. out	库内温度 Chamber Temp.	制冷剂 RFNT	网带宽度 Belt Width	库体外形尺寸 Online Dim. (LxWxH)
型号 Model	kg/h	kW	kW	min	℃	℃	℃		mm	m
ZLBA-500	500	120	41	10-40	10	-18	-38	R717	1500	13x3.0x3.0
ZLBA-850	850	180	52							19.7x3.0x3.0
ZLBA-1000	1000	230	66							25x3.0x3.0
ZLBA-1700	1700	350	104							19.7x5.4x3.0

注：1. 常用制冷剂均适用，如 R717/R22/CO2 2. 上述冻结能力以扇贝丁为例

Note: • Refrigerant: R717, R22, CO2 • Freezing capacity is calculated based on scallop.

步入式冷库

Walk In Prefab Cold Storage

能力范围 Scope

容积 | Volume

5.6~300 m³

应用领域 Application

广泛适用于各企事业单位、宾馆、饭店、酒家、商店等部门，满足肉、蛋、乳制品、海产品及其它食品冷冻、冷藏的需求

It's widely used in enterprises, hotels, restaurants, shop and so on for preserving meat, eggs, dairy, seafood and other foods



产品特性 Features

■ 配套齐全

• 配有全套制冷机组、冷风机、照明灯具和自动保护装置，能自动开停制冷机组，自动融霜，操作简便可靠

■ 节能

• 围护结构采用聚氨酯保温板，导热系数低，具有良好的保温隔热效果

■ 可塑性强

• 保温板的规格均符合现行建筑模数要求，冷库布局可按客户要求布置
• 组装施工周期短，投产使用见效快

■ 结构可靠

• 聚氨酯保温板嵌合部分采用了PVC框材，强度可靠，性能优异

■ 美观

• 保温板及外围护结构有多达数十种可选颜色，可配合任何风建筑物的需要

Complete Equipment

* The cold storage have complete refrigeration unit in auto on/off control, air cooler in auto-defrosting control, lighting and automatic protection devices. The system is easy to operate.

Energy Saving

* Enclosure structure adopt polyurethane insulation panel, low thermal conductivity, excellent thermal insulation effect.

Strong Flexibility

* Insulation panels specifications comply with the requirements of the existing building modulus, layout of cold storage can be done by clients requirement.

* Short installation period return period.

Reliable Structure

* PU insulation panel tongue and groove edge adopt PVC material with reliable strength and good performance.

Attractive Appearance

* The insulation panel and over dozens of color of enclosure sheet could meet requirement of any building style.

冷藏库（中温库）

Cold storage (Medium temperature storage)

能力范围 Scope

温度标准 | Temperature: +5~-5 °C

应用领域 Application

适合存放冻结后食品的冷藏
Refrigerated storage of frozen food



冷冻库（低温库）

Freezer Cold Storage (Cryogenic Storage)

能力范围 Scope

温度标准 | Temperature: -18~-25 °C

应用领域 Application

适合存放猪牛羊肉、鱼、禽肉，疫苗
Suitable for storage of pig, beef, mutton, fish, poultry meat, vaccines



速冻库

Blast Freezer Storage

能力范围 Scope

温度标准 | Temperature: -35~-40 °C

应用领域 Application

适合存放金枪鱼、三文鱼
Store tuna and salmon



氨用空气冷却器 Ammonia Air Cooler

能力范围 Scope

制冷能力 | Cooling Capacity 10.29~124.58 kW

应用领域 Application

广泛应用于食品冷冻、冻结、冷藏、速冻、保鲜、高低温贮存库、空调加工间等领域。

Widely used in food refrigeration, freezing, frozen, blast freezing, fresh, high and low-temperature storage library, air-conditioned rooms and other areas.



产品特性 Features

■ 优良设计性能

- 国际先进的整体翅片，片形先进，风阻小、单片列数多、组合灵活等
- 自带唇形凸起定位翅片间距，片距准确，加大翅片与换热管接触面积
- 进口高效轴流风机，有效能高、噪音小、风量大、射程远、功率低等特点，也可选配国产风机
- 风筒采用特殊曲面设计，有效降低风阻、噪声，提高效能、增加风量及射程，强度高，外形美观
- 专业软件进行传热计算，制冷负荷精确匹配

■ 高效率

- 翅片整体波纹，在结霜过程仍可保持高的热交换效率
- 盘管采用整体热浸锌，传热效率高，热阻小，耐腐蚀性能好，融霜迅速可靠耐用
- 壳体采用镀锌钢板及防锈烤漆喷塑，耐腐蚀、美观、清洁、易于拆卸

■ 可选项

- 盘管为铝管铝片，不锈钢管铝片
- 纯热氨冲霜，水、热氨混合冲霜
- 落地式安装

Excellent Design Performance

- * International advanced whole fin-shaped, piece of advanced, small wind resistance, many columns of monolithic and flexible combination
- * Own lip protruded locating fin spacing, fin spacing accurate, fins and tubes to increase the contact area
- * Import efficient axial fans, high energy efficient, low noise, large air volume, long range, low power, and with optional domestic fans
- * Air duct using a special surface design, effectively reduce wind resistance and noise, improve performance, increase air volume and range, high strength, beautiful appearance
- * Professional software for heat transfer calculations, the cooling load is an exact match

High Efficiency

- * Overall corrugated fins, and still maintain high efficiency heat exchange in the frosting process
- * Overall hot-dip zinc coils, high heat transfer efficiency, low thermal resistance, good corrosion resistance, quickly defrost

Reliable and Durable

- * Galvanized steel shell with rust baking varnish and spray, corrosion-resistant, beautiful, clean, easy to disassemble

Options

- * Coil is aluminum tube aluminum plate, stainless steel tube aluminum plate
- * Pure hot ammonia defrosting, water and hot ammonia mixed defrosting
- * Floor-mounted

氨用空气冷却器主要技术参数表

Specification of Ammonia Air Cooler Technology Parameter Table

型号 Model	制冷量 Refrigeration Capacity	蒸发面积 Evap. Area	风量 Air volume	预计射程 Expected range	轴流风机 总功率 Axial fan total power	制冷剂 Refrigerant		冲霜水 Defrosting water		冲霜水量 Amount of defrosting water (W)
	$\Delta t_m = 10^\circ\text{C}$ $t_o = -10^\circ\text{C}$					进口 Inlet	出口 Outlet	进口 Inlet	出口 Outlet	
						kW	DN mm	DN mm	DN mm	
D071-96W/16AG/L/SL	15.93	95.5	11000	24	0.88	15	32	32	80	4.8
D071-128W/16AG/L/SL	18.52	127.33	10000	22	0.88	15	32	40	80	6.4
D091-168W/16AG/L/SL	29.47	167.12	20000	36	1.65	20	40	40	100	8.4
D091-223W/16AG/L/SL	34.2	222.82	18000	32	1.65	20	50	50	125	11.15
D071-74W/18AG/L/SL	12.62	73.13	11000	24	0.88	15	32	32	80	3.7
D071-98W/18AG/L/SL	16.82	97.51	10000	22	0.88	15	32	32	80	4.9
D071-122W/18AG/L/SL	18.16	121.88	9000	19	0.88	15	32	40	80	6.1
D091-128W/18AG/L/SL	25.22	127.98	20000	36	1.65	20	40	40	80	6.4
D091-171W/18AG/L/SL	29.07	170.63	18000	32	1.65	20	40	40	100	8.55
D091-214W/18AG/L/SL	34.07	213.29	17000	30	1.65	20	50	50	125	10.7
D091-256W/18AG/L/SL	38.42	255.95	16000	28	1.65	20	50	50	125	12.8
D071-60W/110AG/L/SL	11.47	59.71	11000	24	0.88	15	32	25	80	3
D071-80W/110AG/L/SL	14.35	79.61	10500	23	0.88	15	32	32	80	4
D071-100W/110AG/L/SL	16.86	99.51	10000	22	0.88	15	32	32	80	5
D091-105W/110AG/L/SL	21.21	104.49	20000	36	1.65	20	40	32	80	5.25
D091-140W/110AG/L/SL	26.57	139.32	19000	34	1.65	20	40	40	100	7
D091-175W/110AG/L/SL	31.12	174.15	18000	32	1.65	20	50	40	100	8.75
D091-209W/110AG/L/SL	35.06	208.98	17000	30	1.65	20	50	50	125	10.45
D071-51W/112AG/L/SL	11.35	50.76	12000	27	0.88	15	32	25	80	2.55
D071-68W/112AG/L/SL	13.81	67.68	11000	24	0.88	15	32	25	80	3.4
D071-85W/112AG/L/SL	16.06	84.6	10500	23	0.88	15	32	32	80	4.25
D071-102W/112AG/L/SL	18.05	101.52	10000	22	0.88	15	32	32	80	5.1
D091-119W/112AG/L/SL	25.57	118.45	20000	36	1.65	20	40	40	80	5.95
D091-149W/112AG/L/SL	28.84	148.06	19000	34	1.65	20	40	40	100	7.45
D091-178W/112AG/L/SL	33.39	177.67	18000	32	1.65	20	50	50	100	8.9
D071-45W/114AG/L/SL	10.29	44.37	12000	27	0.88	15	32	25	80	2.25
D071-60W/114AG/L/SL	12.54	59.16	11500	26	0.88	15	32	25	80	3
D071-74W/114AG/L/SL	14.6	73.95	11000	24	0.88	15	32	32	80	3.7
D091-104W/114AG/L/SL	23.07	103.53	20500	37	1.65	20	40	32	80	5.2
D091-130W/114AG/L/SL	26.79	129.42	19500	35	1.65	20	40	40	100	6.5
D091-156W/114AG/L/SL	30.05	155.3	18500	33	1.65	20	40	40	100	7.8
D071-70W/11014AG/L/SL	13.38	69.39	11000	24	0.88	15	32	32	80	3.5
D071-90W/11014AG/L/SL	16.42	89.29	10500	23	0.88	15	32	32	80	4.5
D071-110W/11014AG/L/SL	18.96	109.19	10000	22	0.88	15	32	40	80	5.5
D091-122W/11014AG/L/SL	25.2	121.43	20000	36	1.65	20	40	40	80	6.1
D091-157W/11014AG/L/SL	30.39	156.26	18500	33	1.65	20	40	40	100	7.85
D091-192W/11014AG/L/SL	35.35	191.09	18000	32	1.65	20	50	50	100	9.6

氨用空气冷却器主要技术参数表

Specification of Ammonia Air Cooler Technology Parameter Table

型号 Model	制冷量 Refrigeration Capacity	蒸发面积 Evap. Area	风量 Air volume	预计射程 Expected range	轴流风机 总功率 Axial fan total power	制冷剂 Refrigerant		冲霜水 De frosting water		冲霜水量 Amount of defrosting water (W)
	$\Delta t_m = 10^\circ\text{C}$ $t_0 = -10^\circ\text{C}$					进口 Inlet	出口 Outlet	进口 Inlet	出口 Outlet	
						kW	DN mm	DN mm	DN mm	
D071-195W/26AG/L/SL	34.08	194.81	22000	24	1.76	25	50	50	100	9.75
D071-260W/26AG/L/SL	40.79	259.75	20000	22	1.76	25	50	50	125	13
D091-340W/26AG/L/SL	62.51	339.01	40000	36	3.3	32	65	50	150	17
D091-453W/26AG/L/SL	74.62	452.01	36000	32	3.3	32	65	65	150	22.65
D071-150W/28AG/L/SL	28.55	149.18	22000	24	1.76	25	40	40	100	7.5
D071-199W/28AG/L/SL	34.62	198.91	20000	22	1.76	25	50	50	100	9.95
D071-249W/28AG/L/SL	40.16	248.64	18000	19	1.76	25	50	50	125	12.45
D091-260W/28AG/L/SL	52.45	259.61	40000	36	3.3	32	65	50	125	13
D091-347W/28AG/L/SL	63.13	346.14	36000	32	3.3	32	65	65	150	17.35
D091-433W/28AG/L/SL	72.61	432.68	34000	30	3.3	32	65	65	150	21.65
D091-520W/28AG/L/SL	80.35	519.22	32000	28	3.3	32	65	65	150	26
D071-163W/210AG/L/SL	31.6	162.41	21000	23	1.76	25	40	40	100	8.15
D071-204W/210AG/L/SL	37.22	203.01	20000	22	1.76	25	50	50	100	10.2
D071-244W/210AG/L/SL	40.88	243.61	19000	21	1.76	25	50	50	125	10.2
D091-283W/210AG/L/SL	57.97	282.62	38000	34	3.3	32	65	50	125	14.15
D091-354W/210AG/L/SL	64.96	353.28	36000	32	3.3	32	65	65	150	17.7
D091-424W/210AG/L/SL	74.49	423.93	34000	30	3.3	32	65	65	150	21.2
D071-139W/212AG/L/SL	28.83	138.07	22000	24	1.76	25	40	40	100	6.95
D071-173W/212AG/L/SL	34.43	172.59	21000	23	1.76	25	50	40	100	8.65
D071-208W/212AG/L/SL	38.08	207.11	20000	22	1.76	25	50	50	100	10.4
D091-241W/212AG/L/SL	52.98	240.27	22000	24	3.3	32	65	50	125	12.05
D091-301W/212AG/L/SL	62.04	300.34	38000	34	3.3	32	65	50	150	15.05
D091-361W/212AG/L/SL	69.87	360.41	36000	32	3.3	32	65	65	150	18.05
D071-91W/214AG/L/SL	22.05	90.52	24000	38	1.76	20	40	32	80	4.55
D071-121W/214AG/L/SL	27.61	120.69	23000	26	1.76	20	40	40	80	6.05
D071-151W/214AG/L/SL	32.25	150.86	22000	24	1.76	25	50	40	100	7.55
D071-182W/214AG/L/SL	36.04	181.04	21000	23	1.76	25	50	50	100	9.1
D091-211W/214AG/L/SL	49.39	210.03	41000	37	3.3	32	65	50	125	10.55
D091-263W/214AG/L/SL	58.38	262.53	39000	35	3.3	32	65	50	125	13.15
D091-316W/214AG/L/SL	65.63	315.04	37000	33	3.3	32	65	50	150	15.8
D071-142W/21014AG/L/SL	28.44	141.55	22000	24	1.76	25	40	40	100	7.1
D071-183W/21014AG/L/SL	34.64	182.15	21000	23	1.76	25	50	50	100	9.15
D071-223W/21014AG/L/SL	39.94	222.75	20000	22	1.76	25	50	50	125	11.15
D091-247W/21014AG/L/SL	52.04	246.32	40000	36	3.3	32	65	50	125	12.35
D091-317W/21014AG/L/SL	62.71	316.98	37000	33	3.3	32	65	50	150	15.85
D091-388W/21014AG/L/SL	71.95	387.64	36000	32	3.3	32	65	65	150	19.4

氟用空气冷却器主要技术参数表

Specification of Freon Air Cooler Technology Parameter Table

型号 Model	制冷量 Refrigeration Capacity		管内容积 Pipe internal volume	蒸发面积 Evap. Area	风量 Air volume	预计射程 Expected range	制冷剂 Refrigerant		热气 进出 Hot air In/Out	电融霜 总功率 Electric defrosting total power	风机电流 Fans current	风机电压 Fans voltage	风机总功率 Fans total power	排水管 尺寸 Drain Pipe size
	$t = 0^\circ\text{C}$ $t_0 = 7^\circ\text{C}$	$t = -18^\circ\text{C}$ $t_0 = -25^\circ\text{C}$					进口 Inlet	出口 Outlet						
	kW	kW					L	m ³ /h						
4 C 1/50.1	11.59	8.74	12	80.4	7510	19	16	35	19	6.6	1.35	400/3/50	0.73	2
4 D 1/50.1	13.59	10.93	15	100.5	7340	19	16	35	19	6.6	1.35	400/3/50	0.73	2
4 E 1/50.1	15.49	12.16	18	120.6	7090	18	16	35	19	7.7	1.35	400/3/50	0.73	2
4 F 1/50.1	16.91	13.3	21	140.7	6980	18	22	42	19	8.8	1.35	400/3/50	0.73	2
4 C 1/71.1	19.19	15.2	21	136.3	12020	29	22	42	19	8.4	1.75	400/3/50	0.98	2
4 D 1/71.1	22.52	18.34	26	170.4	11890	29	22	42	19	8.4	1.75	400/3/50	0.98	2
4 E 1/71.1	25.94	19.95	31	204.5	11580	28	22	42	19	10.8	1.75	400/3/50	0.98	2
4 C 1/80.1	32.49	26.51	34	225.8	20820	36	22	42	19	12	4	400/3/50	2	2
4 D 1/80.1	37.62	30.59	43	282.3	19960	36	28	54	19	13.5	4	400/3/50	2	2
4 E 1/80.1	41.61	32.87	51	338.7	18260	35	28	54	19	16.5	4	400/3/50	2	2
7 C 1/50.1	8.08	6.65	12	47.2	7580	19	16	28	19	6.6	1.35	400/3/50	0.73	2
7 D 1/50.1	9.6	7.79	15	59	7410	19	16	28	19	6.6	1.35	400/3/50	0.73	2
7 E 1/50.1	10.83	8.84	18	70.8	7130	19	16	35	19	7.7	1.35	400/3/50	0.73	2
7 G 1/50.1	14.06	10.93	24	94.3	7050	18	22	42	22	9.9	1.35	400/3/50	0.73	2
7 D 1/71.1	15.68	12.83	26	100	12060	29	22	42	19	8.4	1.75	400/3/50	0.98	2
7 E 1/71.1	17.29	15.11	31	120	11950	29	22	42	19	10.8	1.75	400/3/50	0.98	2
7 G 1/71.1	23.85	18.24	42	160	11660	28	22	42	22	14.4	1.75	400/3/50	0.98	2
7 D 1/80.1	27.65	22.52	43	165.6	20670	36	22	54	22	13.5	4	400/3/50	2	2
7 E 1/80.1	31.73	25.18	51	198.8	19960	36	22	54	19	16.5	4	400/3/50	2	2
7 G 1/80.1	39.33	30.4	68	265	19090	35	28	64	22	22.5	4	400/3/50	2	2
10 D 1/50.1	7.32	5.99	15	42.4	7480	19	16	28	19	6.6	1.35	400/3/50	0.73	2
10 E 1/50.1	8.46	7.03	18	50.9	7320	19	16	28	19	7.7	1.35	400/3/50	0.73	2
10 G 1/50.1	11.4	9.12	24	67.8	7250	18	16	35	22	9.9	1.35	400/3/50	0.73	2
1011/50.1	13.87	10.64	30	84.7	7020	18	16	35	22	12.1	1.35	400/3/50	0.73	2
10 D 1/71.1	13.21	10.45	26	71.8	12140	29	16	35	19	8.4	1.75	400/3/50	0.98	2
10 E 1/71.1	15.49	12.16	31	86.2	12080	29	22	42	19	10.8	1.75	400/3/50	0.98	2
10 G 1/71.1	19.38	15.39	42	115	11860	28	22	42	22	14.4	1.75	400/3/50	0.98	2
1011/71.1	22.04	17.77	51	143.7	11690	28	22	54	22	16.8	1.75	400/3/50	0.98	2
10 E 1/80.1	26.03	20.9	51	142.7	20690	36	22	54	19	16.5	4	400/3/50	2	2
10 G 1/80.1	32.97	26.22	68	190.4	19260	35	28	54	22	22.5	4	400/3/50	2	2
12 E 1/50.1	8.27	6.56	18	43.1	7460	19	16	28	19	7.7	1.35	400/3/50	0.73	2
12 G 1/50.1	10.26	8.27	24	57.4	7380	18	16	35	22	9.9	1.35	400/3/50	0.73	2
1211/50.1	12.45	9.79	30	71.8	7180	18	16	35	22	12.1	1.35	400/3/50	0.73	2
12 E 1/71.1	13.78	11.02	31	73.1	12130	29	22	42	19	10.8	1.75	400/3/50	0.98	2
12 G 1/71.1	17.58	13.78	42	97.4	12010	28	22	42	22	14.4	1.75	400/3/50	0.98	2
1211/71.1	19.19	16.06	51	121.8	11840	28	22	54	22	16.8	1.75	400/3/50	0.98	2
12 E 1/80.1	23.56	18.72	51	121	21230	36	22	54	19	16.5	4	400/3/50	2	2
12 G 1/80.1	29.45	23.37	68	161.3	20460	35	28	54	22	22.5	4	400/3/50	2	2
16-8 E 1/50.1	8.74	7.22	18	52.8	7310	19	16	28	19	7.7	1.35	400/3/50	0.73	2
16-8 G 1/50.1	12.07	9.6	24	73.6	7210	18	16	35	22	9.9	1.35	400/3/50	0.73	2
16-811/50.1	14.73	11.21	30	94.4	7040	18	16	35	22	12.1	1.35	400/3/50	0.73	2
16-8 E 1/71.1	15.77	12.35	31	89.5	11980	29	22	42	19	10.8	1.75	400/3/50	0.98	2
16-8 G 1/71.1	20.14	15.96	42	124.8	11630	28	22	42	22	14.4	1.75	400/3/50	0.98	2
16-811/71.1	24.32	18.62	51	160.1	11410	28	22	54	22	16.8	1.75	400/3/50	0.98	2
16-8 E 1/80.1	26.6	21.28	51	148	20530	36	22	54	19	16.5	4	400/3/50	2	2
16-8 G 1/80.1	33.82	26.41	68	206.8	19180	35	28	54	22	22.5	4	400/3/50	2	2

工业用空气冷却器(氟用) Industrial Air Cooler (Freon)

能力范围 Scope

制冷能力 | Cooling Capacity 8~80 kW

应用领域 Application

广泛用于冷冻冷藏或各种高低温冷库等

Widely used in refrigeration or a variety of high and low temperature cold storage, etc.



产品特性 Features

- 工质: 氟 R22、R404A、R507A 等
 - 换热管: 20 口径钢管或不锈钢管; 翅片: 钢翅片或翅片, 片距: 8mm, 10mm, 12mm
 - 外壳: 镀锌钢板、不锈钢板和喷塑钢板
 - 融霜形式: 空气融霜, 电融霜
 - 采用低噪音免维护轴流风机, 电机防护等级IP54
 - 悬浮式翅片盘管结构, 结构安全可靠, 结构强度高
 - 波纹翅片, 整体镀锌或胀管工艺使翅片盘管紧密的结合, 传热效率高、运行寿命长
 - 优化融霜设计, 提高了融霜效率, 融霜彻底, 杜绝结冰现象
 - 提供多种组合, 供用户自由选择
- * Refrigerant: Freon R22, R404A, R507A, etc.
 - * Heat transfer tubes: 20 diameter steel or stainless steel tube;
Fin: steel or aluminum,
Fin spacing: 8mm, 10mm, and 12mm
 - * Shell: galvanized steel plate, stainless steel plate and aplastic steel
 - * Defrost forms: air defrosting, electric defrosting
 - * Maintenance-free axial fan with low noise, motor protection IP54
 - * Suspension finned coil structure, safe and reliable structure, high strength of structure
 - * Corrugated fins, overall galvanized or tube expanding process to make the fin coil close, high heat transfer efficiency, long service life
 - * Optimized defrost design, improve the defrosting efficiency, prevent splash phenomenon
 - * Provide a variety of combinations, free for the user to choose

冷库风机主要技术参数表

Specification of Air Cooler Technology Parameter Table

型号 Model	制冷量 Refrigeration Capacity		蒸发面积 Evap. Area	风量 Air volume	预计射程 Expected range	输入额定功率 Input power rating	制冷剂 Refrigerant		电融霜功率 Electric defrosting Power
	t = 0°C t ₀ = -8°C	t = -18°C t ₀ = -25°C					进口 Inlet	出口 Outlet	
	kW	kW	m ²	m ³ /h	m	kW	mm	mm	kW
ZLF18C71E	9.86	7.74	73.13	11000	26	0.94	DN25	DN40	8.78
ZLF18C91E	17.26	13.54	127.97	19500	30	1.85	DN25	DN40	15.36
ZLF110C71E	8.05	6.32	59.71	11500	26	0.94	DN25	DN40	7.16
ZLF110E71E	13.42	10.53	99.51	10500	25	0.94	DN25	DN40	11.94
ZLF110E91E	23.49	18.43	174.15	18500	30	1.85	DN25	DN40	20.9
ZLF112D71E	9.13	7.16	67.68	11500	26	0.94	DN25	DN40	9.48
ZLF112E71E	11.41	8.95	84.6	10500	25	0.94	DN25	DN40	11.84
ZLF112F71E	13.69	10.74	101.52	10000	24	0.94	DN25	DN40	14.21
ZLF112C91E	11.98	9.4	88.83	21500	31	1.85	DN25	DN40	12.44
ZLF112D91E	15.98	12.53	118.44	20500	30	1.85	DN25	DN40	16.58
ZLF112F91E	23.96	18.8	177.66	19000	28	1.85	DN25	DN40	24.87
ZLF28C71E	20.12	15.78	149.18	22000	26	2x0.94	DN25	DN40	17.9
ZLF28C91E	35.02	27.47	259.6	39000	30	2x1.85	DN40	DN65	31.15
ZLF210C71E	16.43	12.89	121.8	23000	26	2x0.94	DN25	DN40	14.62
ZLF210E71E	27.38	21.48	203	21000	25	2x0.94	DN25	DN40	24.36
ZLF210E91E	47.65	37.38	353.27	37000	30	2x1.85	DN40	DN65	42.39
ZLF212D71E	18.62	14.61	138.07	23000	26	2x0.94	DN25	DN40	19.33
ZLF212E71E	23.28	18.26	172.59	21000	25	2x0.94	DN25	DN40	24.16
ZLF212F71E	27.94	21.91	207.11	20000	24	2x0.94	DN25	DN40	28.99
ZLF212C91E	24.31	19.07	180.2	43000	31	2x1.85	DN40	DN65	25.23
ZLF212D91E	32.41	25.42	240.27	41000	30	2x1.85	DN40	DN65	33.64
ZLF212F91E	48.61	38.14	360.4	38000	28	2x1.82	DN40	DN65	50.46
ZLF38C71E	30.38	23.83	225.23	33000	26	3x0.94	DN40	DN65	27.03
ZLF38C91E	52.77	41.4	391.22	58500	30	3x1.85	DN50	DN80	46.95
ZLF310C71E	24.8	19.46	183.9	34500	26	3x0.94	DN40	DN65	22.07
ZLF310E71E	41.34	32.43	306.5	31500	25	3x0.94	DN40	DN65	36.78
ZLF310E91E	71.81	56.33	532.39	55500	30	3x1.85	DN50	DN80	63.89
ZLF312D71E	28.12	22.06	208.46	34500	26	3x0.94	DN40	DN65	29.18
ZLF312E71E	35.15	27.57	260.57	31500	25	3x0.94	DN40	DN65	36.48
ZLF312F71E	42.18	33.09	312.69	30000	24	3x0.94	DN40	DN65	43.78
ZLF312C91E	36.63	28.74	271.57	64500	31	3x1.85	DN50	DN80	38.02
ZLF312D91E	48.84	38.31	362.1	61500	30	3x1.85	DN50	DN80	50.69
ZLF312F91E	73.26	57.47	543.15	57000	28	3x1.82	DN50	DN80	76.04

注: TD(°C)=库温-蒸发温度

Note: TD (°C) = storage temperature - evaporation temperature

冷库风机(超商、低温物流业态用)

Cold Storage Air Cooler (for Supermarket, Cold Logistics)

性能 Performance

使用温度: 3°C~10°C、-10°C~3°C、-35°C~-10°C
Operating temperature: 3°C ~ 10°C、-10°C ~ 3°C、-35°C ~ -10°C

应用领域 Application

超市、商场、低温物流等场所的冷藏、冷冻商用产品, 适用于冷链售卖、仓储、物流环节储存、展示乳制品、日配品、饮品、精肉、鲜鱼、果蔬、蛋类等冷藏商品及冷冻类商品。

Used in supermarkets, shopping malls, low temperature logistics and other places of refrigeration, commercial refrigeration products, apply to the sale of the cold chain, warehousing, logistics chain store, display dairy products, daily goods, beverages, meat, fish, fruits and vegetables, eggs and other refrigerated and frozen commodity .



产品特性 Features

- 全铝制压花铝板外壳, 设计简洁, 重量轻、耐腐蚀
- 翅片呈波浪形设计, 增大翅片面积, 使制冷能力增强
- 机体自带接线盒, 电气配线简单、安全
- 采用低噪型电机、扇叶
- 可保持冷库内适当湿度, 防止部分货品内水分流失
- 采用倾斜式排水盘, 不影响冷风机水平安装, 排水迅速
- 侧板折页开启方便, 维修保养方便
- 排水方向可调

- * The all-aluminum embossed aluminum shell, simple design, light weight, corrosion resistance
- * Wavy fin design, increased fins area, made the cooling capacity enhanced
- * Machine comes with junction boxes, simple and safe electrical wiring
- * Using low-noise motors, fan blades
- * Maintain proper humidity in the cold storage, to prevent the loss of water within the goods
- * Using pitched drain pan, do not affect the horizontal mounting of the air cooler, drain quickly
- * Side panels folding easy to open and easy to maintenance
- * Adjustable drainage direction

冷库风机主要技术参数表

Specification of Air Cooler Technology Parameter Table

使用温度 Operating temp.	TD(°C) 型号 Model	适用业态 Applicable formats	冷冻能力 (W) Cooling capacity								产品重量 Weight (kg)	外形尺寸 Outside dimension LxWxH(mm)
			5	6	7	8	9	10	11	12		
≥ 3°C	ZL-CV3000	超商、低温物流 Supermarket, cold logistics	1505	1806	2107	2408	2709	3010	3311	3612	22	768x368x421
	ZL-CV6000	超商、低温物流 Supermarket, cold logistics	3115	3738	4361	4984	5607	6230	6853	7476	36	1356x368x421
	ZL-CV9000	超商、低温物流 Supermarket, cold logistics	4665	5598	6531	7464	8397	9330	10263	11196	53	1944x368x421
-10°C ~ 3°C	ZL-CV3000H	超商、低温物流 Supermarket, cold logistics	1505	1806	2107	2408	2709	3010	3311	3612	24	768x368x421
	ZL-CV6000H	超商、低温物流 Supermarket, cold logistics	3115	3738	4361	4984	5607	6230	6853	7476	39	1356x368x421
	ZL-CV9000H	超商、低温物流 Supermarket, cold logistics	4665	5598	6531	7464	8397	9330	10263	11196	57	1944x368x421
-35°C ~ -10°C	ZL-CV2000FH	超商、低温物流 Supermarket, cold logistics	1080	1296	1512	1728	1944	2160	2376	2592	22	768x368x421
	ZL-CV4000FH	超商、低温物流 Supermarket, cold logistics	2245	2694	3143	3592	4041	4490	4939	5388	38	1356x368x421
	ZL-CV6000FH	超商、低温物流 Supermarket, cold logistics	3360	4032	4704	5376	6048	6720	7392	8064	55	1944x368x421

注: TD(°C)=库温-蒸发温度

Note: TD (°C) = storage temperature - evaporation temperature

冷库风机 (低温物流业用) Cold Storage Air Cooler (for Cold Logistics)

性能 Performance

使用温度: 3°C~10°C、-10°C 3°C、-40°C~-10°C
Operating temperature: 3°C ~ 10°C、-10°C 3°C、-40°C -10°C

应用领域 Application

低温物流等场所的冷藏、冷冻商用产品,适用于冷链售卖、仓储、物流环节储存乳制品、日配品、饮品、精肉、鲜鱼、果蔬、蛋类等冷藏商品及冷冻类商品。

Used in low temperature logistics and other places of refrigeration, commercial refrigeration products, apply to the sale of the cold chain, warehousing, logistics chain store, daily goods, beverages, meat, fish, fruit and vegetables, eggs and other refrigerated and frozen commodity.



产品特性 Features

- 坚固镀锌钢板、全抗菌喷涂外壳, 特别适合大型食品冷库和配送中心
- 双层排水盘结构、特殊排水槽设计, 化霜水排除迅速
- 电控箱安装在机器板前, 方便接线、配线操作
- 可开启底板和侧面板的设计, 安装维修方便快捷
- 专门开发的适合大型冷风机使用的大管径内螺纹铜管, 配合高效波纹铝翅片, 蒸发器传热效率高
- 特制进口的冷媒分流器, 保证多回路液体分配均匀, 蒸发器冷却稳定可靠
- 采用不锈钢材质蒸发器端板, 防腐蚀能力强
- 高效进口外转子风机, 送风距离远, 冷却效率高, 安全可靠, 寿命长
- 风机电机内部设置过热保护器, 运行安全可靠
- 蒸发器内置特制电加热器, 除霜效率高, 方便控制

- * Rugged galvanized steel, full antibacterial spray shell, especially for large-scale food cold storage and distribution centers
- * Double drain pan structure, special drain grooves design, to rapidly exclude defrost water
- * Electric control box installed in the front of the machine panel, easy wiring operations
- * Bottom and side panels can be opened in the design, easy to installation and maintenance
- * Specially developed suitable for large air cooler for large diameter internal thread copper pipe, with high efficiency corrugated aluminum fin, evaporator has high heat transfer efficiency
- * Specially imported cooling medium splitter to ensure uniform distribution of multi-loop liquid, evaporator cooling reliable
- * Stainless steel evaporator end plate, strong corrosion resistance
- * Efficient import external rotor fan, air far distance, high cooling efficiency, safety and reliability, long life
- * Set overheating protection inside the fan's motor, safe and reliable
- * Evaporator built-in specially electric heater, high defrosting efficiency, easy control

冷库风机主要技术参数表

Specification of Air Cooler Technology Parameter Table

产品型号 Model	适用业态 Applicable formats	适用温度 Applicable temp. (°C)	制冷量 Refrigeration Capacity (kW)	风量 Air volume (m³/h)	产品重量 Weight (kg)	外形尺寸 Outside dimension LxWxH(mm)
ZL-CB13000	低温物流 cold logistics	3°C~10°C	11.4	5,560	82	1600x792x880
ZL-CB20000	低温物流 cold logistics	3°C~10°C	21.5	13,200	180	2026x850x1080
ZL-CB27000	低温物流 cold logistics	3°C~10°C	26	16,700	230	3620x792x880
ZL-CB41000	低温物流 cold logistics	3°C~10°C	34	16,700	243	3620x792x880
ZL-CB55000	低温物流 cold logistics	3°C~10°C	41	26,000	336	3460x850x1080
ZL-CB63000	低温物流 cold logistics	3°C~10°C	51	25,200	370	3460x850x1080
ZL-CB76000	低温物流 cold logistics	3°C~10°C	61	36,880	449	3820x1020x1270
ZL-CB95000	低温物流 cold logistics	3°C~10°C	77	37,600	540	4890x850x1080
ZL-CB10000H	低温物流 cold logistics	-10°C~3°C	9.8	5,860	100	1600x670x795
ZL-CB21000H	低温物流 cold logistics	-10°C~3°C	19.9	13,800	180	2026x850x1080
ZL-CB29000H	低温物流 cold logistics	-10°C~3°C	27.2	19,220	242	2220x905x1290
ZL-CB42000H	低温物流 cold logistics	-10°C~3°C	39	27,700	320	3460x850x1080
ZL-CB49000H	低温物流 cold logistics	-10°C~3°C	46	27,000	430	3460x1005x1080
ZL-CB58000H	低温物流 cold logistics	-10°C~3°C	54	38,440	336	3820x830x1270
ZL-CB64000H	低温物流 cold logistics	-10°C~3°C	58	41,600	460	4890x850x1080
ZL-CB74000H	低温物流 cold logistics	-10°C~3°C	69.4	40,710	470	4890x850x1080
ZL-CB16000LH	低温物流 cold logistics	-35°C~-10°C	13.6	11,900	140	2620x720x795
ZL-CB24000LH	低温物流 cold logistics	-35°C~-10°C	19	17,800	230	3620x895x880
ZL-CB31000LH	低温物流 cold logistics	-35°C~-10°C	25	17,100	258	3620x895x880
ZL-CB38000LH	低温物流 cold logistics	-35°C~-10°C	31	27,500	410	3460x1005x1080
ZL-CB46000LH	低温物流 cold logistics	-35°C~-10°C	38	26,000	418	3460x1005x1080
ZL-CB52000LH	低温物流 cold logistics	-35°C~-10°C	42	38,000	480	3820x1120x1270
ZL-CB66000LH	低温物流 cold logistics	-35°C~-10°C	53.9	36,900	550	3820x1120x1270

注: TD(°C)=库温-蒸发温度

Note: TD(°C)=storage temperature - evaporation temperature

工业用速冻空气冷却器 Industrial Quick Freezer Air Cooler

能力范围 Scope

制冷能力 | Cooling Capacity 8~50 kW

应用领域 Application

广泛用于各种速冻房间等。

Widely used in all kinds of frozen room etc

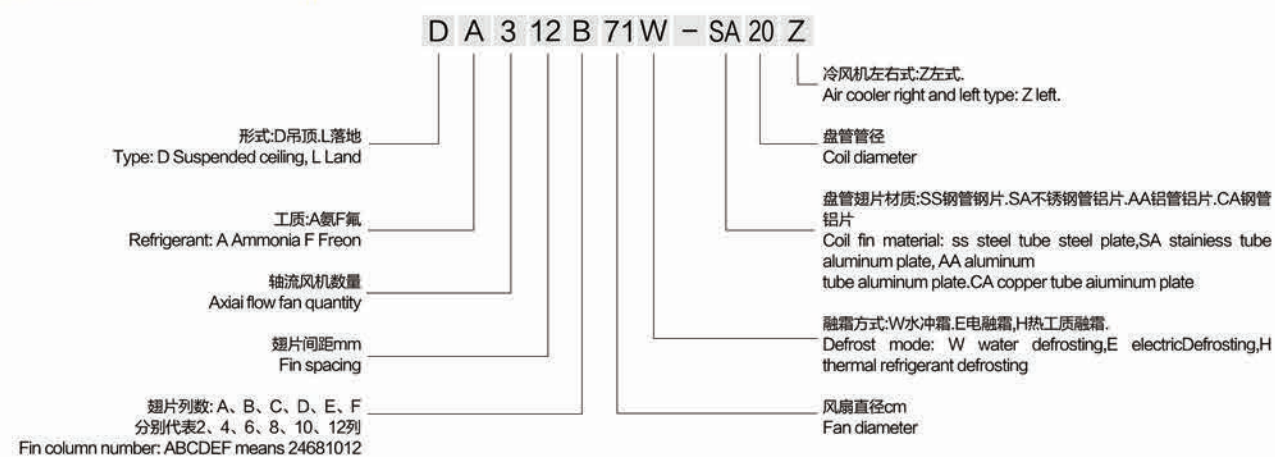
产品特性 Features

- 工质：氟
- 换热管：20 口径钢管或不锈钢管；翅片：钢翅片或翅片片距：10mm, 14mm
- 外壳：镀锌钢板、不锈钢板和喷塑钢板
- 融霜形式：水冲霜，工质融霜
- 采用低噪音免维护轴流风机，电机防护等级IP54
- 悬浮式翅片盘管结构，结构安全可靠，结构强度高
- 波纹翅片，整体镀锌或胀管工艺使翅片盘管紧密的结合，传热效率高、运行寿命长
- 优化融霜设计，提高了融霜效率，融霜彻底，杜绝结冰现象
- 提供多种组合，供用户自由选择



- * Refrigerant: Freon R22、R404A、R507A, etc.
- * Heat transfer tubes: 20 diameter steel or stainless steel tube; Fin: steel or aluminum, Fin spacing: 8mm, 10mm, and 12mm
- * Shell: galvanized steel plate, stainless steel plate and aplastic steel
- * Defrost forms: air defrosting, electric defrosting
- * Maintenance-free axial fan with low noise, motor protection IP54
- * Suspension finned coil structure, safe and reliable structure, high strength of structure
- * Corrugated fins, overall galvanized or tube expanding process to make the fin coil close, high heat transfer efficiency, long service life
- * Optimized defrost design, improve the defrosting efficiency, prevent splash phenomenon
- * Provide a variety of combinations, free for the user to choose

型号说明 Model Description



工业用速冻空气冷却器主要技术参数表

Specification of Industrial Quick Freezer Air Cooler Technology Parameter Table

型号 Model	制冷量 Refrigeration Capacity	蒸发面积 Evap. Area	风量 Air volume	预计射程 Expected range	输入 额定功率 Input power rating	制冷剂 Refrigerant		冲霜水量 Amount of defrosting water (W)	功率 Air duct heating power (H)	净重 Net weight	
	t = -34℃ t ₀ = -40℃					进口 Inlet	出口 Outlet			水冲霜风机 Water defrosting (SS) (SA)	热氨融霜风机 Hot Ammonia defrosting (SS) (SA)
	kW	m ²	m ³ /h	m	kW	mm	mm	t/h	kW	kg	kg
(D/L)(A/F)214D80W-SS20Z	13.19	210	42000	30	2x3.0	DN40	DN65	10.5	2x0.35	910	965
(D/L)(A/F)214E80W-SS20Z	16.48	262.53	42000	30	2x3.0	DN40	DN65	13.13	2x0.35	1110	1190
(D/L)(A/F)214F80W-SS20Z	19.78	315.04	42000	28	2x3.0	DN40	DN65	15.75	2x0.35	960	1015
(D/L)(A/F)21014F80W-SS20Z	24.34	387.63	42000	28	2x3.0	DN40	DN65	19.38	2x0.35	1190	1245
(D/L)(A/F)314D80W-SS20Z	19.87	316.52	63000	30	2x3.0	DN50	DN80	15.83	3x0.35	1010	1065
(D/L)(A/F)314E80W-SS20Z	24.84	395.64	63000	30	2x3.0	DN50	DN80	19.78	3x0.35	1240	1295
(D/L)(A/F)314F80W-SS20Z	29.81	474.77	63000	28	2x3.0	DN50	DN80	23.74	3x0.35	1040	1095
(D/L)(A/F)31014F80W-SS20Z	36.68	584.17	63000	28	2x3.0	DN50	DN80	29.21	3x0.35	1270	1325
										1315	1475
										1705	1775
										1385	1515
										1775	1820
										1490	1570
										1830	1900
										1510	1590
										1850	1920

- 注:
1. 表格中表示为钢管钢片水冲霜冷风机型号, 若表示不锈钢管铝片型号需将"SS" 改"SA", 若表示热氨融霜冷风机型号需将改为"H"
 2. 表中型号为左式空气冷却器, 若为右式空气冷却器需将型号中的"Z"省略
 3. 表中符号(H)表示热氨融霜, (W)表示水冲霜, (SS)表示钢管钢片, (SA)表示不锈钢管铝片
 4. 预计射程是风口轴心速度衰减至0.25m/s时的射流断面与射流出口的距离
 5. 外形尺寸中上行为水冲霜, 下行表示热氨融霜

- Note:
- The table is expressed as steel plate steel pipe water defrosting air cooler model, if the stainless steel aluminum plate models, "SS" needs changed to "SA", if hot ammonia defrosting, the model "W" needs changed to "H"
 - The type in the table is left type air cooler, if it is the right type air cooler, "Z" will be omitted
 - Type(H) means hot Ammonia defrosting, (W) means water defrosting, (SS) means steel pipe steel plate, (SA) means stainless aluminum plate
 - The expected range is jet section, air inlet axial velocity decay to 0.25m/s, and the jet exit distance
 - In outline dimensions of table up-line figure means water defrosting, under-line figure means thermal Ammonia defrosting

空气分离器

Air Separator

产品特性 Features

- 空气分离器将制冷系统中不凝缩气体和氨气分离后，将不凝缩气体排出制冷系统外，提高制冷效果和安全运转
- 设计温度：内筒50℃，夹套50℃
- 设计压力：内筒2.1MPa，夹套2.1MPa
- 液压试验压力：内筒2.63MPa，夹套2.63MPa
- 气密试验压力：内筒2.1MPa，夹套2.1MPa



- * Air separator is used to separate non-condensable gas from ammonia and exhaust out of system to improve refrigeration effect and safety.
- * Design Temp: Inside Cylinder 50°C, jacket 50°C
- * Design Pressure: Inside Cylinder 2.1MPa, jacket 2.1MPa
- * Hydraulic Test: Inside Cylinder 2.63MPa, jacket 2.63MPa
- * Air Tight Pressure: Inside Cylinder 2.1 MPa, jacket 2.1 MPa

技术参数 Parameter Table

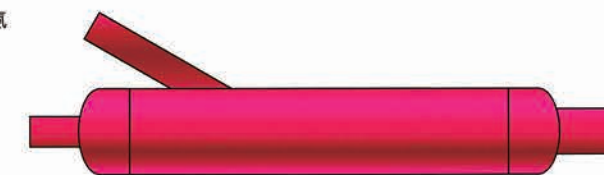
型号 Model	换热面积 Heat Exchange Area	容积 Volume		设备尺寸 Dimension			重量 Weight
		内筒 Inside Cylinder	夹套 Jacket	长度 Length	筒体直径 Cylinder Dia.	高度 Height	
		m ²	m ³	m ³	mm	mm	
KF-32	0.4	0.003	0.006	1650	φ 108	238	45
KF-50	2.4	0.025	0.048	2970	φ 219	430	190

紧急泄氨器

Emergency Drainer

产品特性 Features

- 防止制冷设备在产生意外事故时引起爆炸，把制冷系统中有大量液氨存在的容器用管路和紧急泄氨器联接，情况紧急时，将紧急泄氨器的液氨排出阀和通往紧急泄氨器的自来水阀打开排出
- 设计温度：50℃，
- 设计压力：2.0MPa，
- 液压试验压力：2.5MPa，
- 气密试验压力：2.0MPa，



- * To prevent equipment from explosion caused by any accident, the emergency drainer is used to drain ammonia from vessels with large amount of ammonia. Connect emergency drainer with vessels with piping. In critical situation, open ammonia drainage valve and water valve to drain out ammonia.
- * Design Temp: 50°C
- * Design Pressure: 2.0MPa,
- * Hydraulic Test: 2.5MPa,
- * Air Tight Test: 2.0MPa

技术参数 Parameter Table

型号 Model	容积 Volume	设备尺寸 Dimension		管口尺寸 Dimension			重量 Weight
		长度 Length	筒体直径 Cylinder Dia.	进氨 Ammonia In	进水 Water In	出氨 Ammonia Out	
		mm	mm	mm	mm	mm	
XA-100	0.008	1280	φ 108	DN32	DN32	DN50	40

贮液器

Ammonia Receiver

能力范围 Scope

容积 | Volume

0.53-20.6 m³

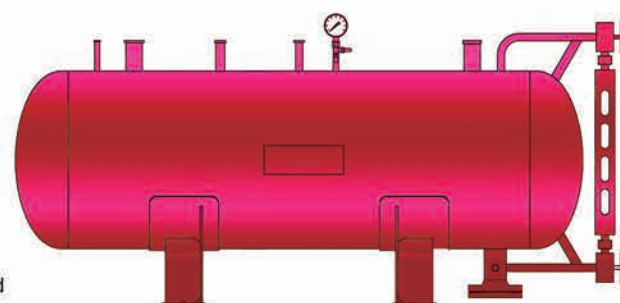
产品特性 Features

- 贮液器在制冷系统中，是调节和稳定制冷剂液体循环量 并用来贮存制冷剂液体
- 试验压力：液压试验 2.63 MPa
气密试验 2.1 MPa
- 设计压力：2.1 MPa
- 设计温度：50℃

* In refrigeration system, ammonia receiver is used to adjust ammonia liquid circulation and preserve the liquid.

* Test pressure: Hydraulic Test 2.63 MPa
Air Tight Test 2.1 MPa

* Design Pressure: 2.1 MPa
* Design Temperature: 50℃



贮液器技术参数 (R717) Ammonia Receiver Parameter Table (R717)

型号 Model	容积 Volume m ³	设备尺寸 Outline			重量 Weight kg
		长 (L)	宽 (W)	高	
				(H)	
mm	mm	mm	kg		
ZA-0.5	0.53	2022	616	1016	346
ZA-1.0	0.99	3622	616	1016	546
ZA-1.5	1.69	3522	816	1216	733
ZA-2.0	2.19	4522	816	1216	955
ZA-2.5	2.59	5322	816	1216	1042
ZA-3.0	3.14	5116	920	1320	1370
ZA-3.5	3.56	5776	920	1320	1523
ZA-5.0	4.98	4627	1224	1624	1948
ZA-6.5	6.54	4531	1428	1828	2645
ZA-8	8.26	5631	1428	1828	3182
ZA-10	10.4	7031	1428	1878	3871
ZA-15	15.5	6439	1836	2286	5930
ZA-20	20.6	8439	1836	2286	7550

油分离器

Oil Separator

能力范围 Scope

容积 | Volume

0.09-2.22 m³

产品特性 Features

- 油分离器用来把压缩机后的氨气借油氨比重不同，使混合气体经过直径较大的容器，减低其流速和改变其流动方向，使油从其中沉降后分离
- 设计温度：150℃
- 设计压力：2.1 MPa

* As per different proportion of ammonia gas and lubrication oil, the oil separator is used to make mixture gas of ammonia and oil pass through large diameter vessel, reduce their flow velocity and change their flow direction, and separate oil through settlement.

* Design Temp: 150℃
* Design Pressure: 2.1 MPa



油分离器技术参数 Oil Separator Parameter Table

型号 Model	液压试验压力 Hydraulic Test MPa	气密试验压力 Air Tight Test MPa	容积 Volume m ³	设备尺寸 Outline		重量 Weight kg
				圆筒直径 Cylinder Dia. mm	高度	
					Height mm	
YF-65	2.78	2.1	0.09	φ 325	1593	113
YF-80	2.78	2.1	0.19	φ 426	1853	201
YF-100	2.78	2.1	0.34	φ 516	2094	254
YF-125	2.78	2.1	0.54	φ 616	2320	374
YF-150	2.78	2.1	0.82	φ 716	2586	517
YF-200	2.78	2.1	2.22	φ 1020	3444	1085

干式油分离器

Dry Oil Separator

能力范围 Scope

容积 | Volume

0.06-1.25 m³

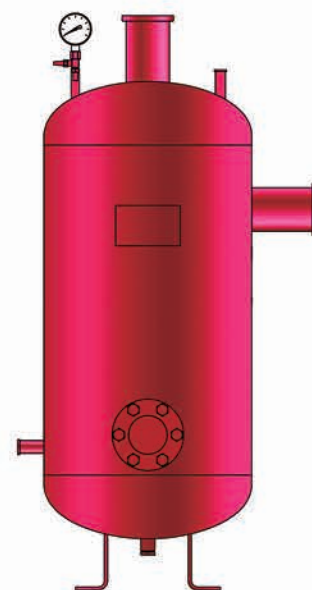
产品特性 Features

- 干式油分离器是将排气中所含润滑油绝大部分分离出来，提高系统的制冷能力
- 设计温度:150℃，
- 设计压力:2.1MPa，

* Dry oil separator is to separate the lubricating oil contained in the exhaust to improve the refrigeration capacity of the system

* Design Temp: 150℃

* Design Pressure: 2.1 Mpa



技术参数 Parameter Table

型号 Model	气压试验压力 Hydraulic Test	容积 Volume	设备尺寸 Outline		重量 Weight
			圆筒直径 Cylinder Dia.	高度 Height	
	MPa	m ³	mm	mm	kg
YF-65T	2.45	0.06	φ325	1193	117
YF-80T	2.45	0.12	φ426	1350	184
YF-100T	2.45	0.21	φ516	1442	245
YF-125T	2.45	0.33	φ616	1552	322
YF-150T	2.45	0.51	φ716	1687	410
YF-200T	2.45	1.25	φ1020	2204	799

集油器

Oil Collector

能力范围 Scope

容积 | Volume

0.025-0.26 m³

产品特性 Features

- 集油器用来收集氨油分离器及其他设备内的润滑油，并在低压状况下将油放出，这样可减少氨的损失并保证工作人员的安全

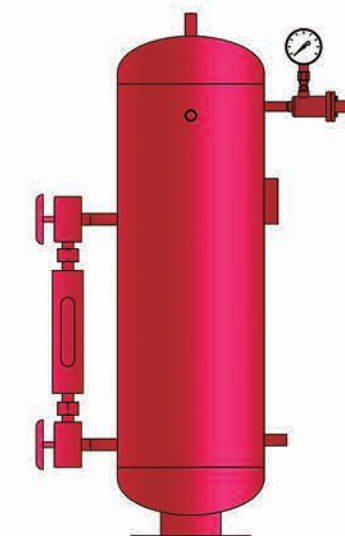
- 设计压力: 2.1MPa，

- 气密试验压力: 2.1MPa

* Oil collector is used to collect lubrication oil from ammonia separator and other accessories and drain oil in low pressure condition to reduce ammonia loss as well as ensuring operators security.

* Design Pressure: 2.1Mpa

* Hydraulic Test: 2.1 Mpa



技术参数 Parameter Table

型号 Model	设计温度 Design Temp.	液压试验压力 Hydraulic Test	容积 Volume	设备尺寸 Outline		重量 Weight
				圆筒直径 Cylinder Dia.	高度 Height	
	℃	MPa	m ³	mm	mm	kg
JY-200	50	2.63	0.025	φ219	921	60
JY-300	50	2.63	0.075	φ325	1178	103
JY-500	50	2.63	0.26	φ516	1581	215
RJY-500	100	2.65	0.26	φ516	1581	196

注: 1. JY-500型: 带蒸汽加热盘管
2. RJY-500型: 带电加热管

Note: With steam heating coil
With e-heating coil

泵组集油器

Oil Collector for Pumpunit

能力范围 Scope

容积 | Volume

0.06-1.25 m³

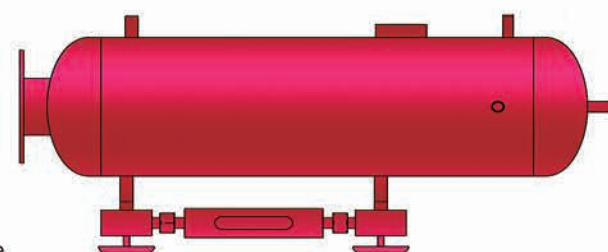
产品特性 Features

- 泵组集油器，收集低压循环桶及其它设备内的润滑油，并在低压状况下将油放出减少氨的损失并保证工作人员安全
- 设计压力：2.1MPa,
- 气密试验压力：2.1 MPa

* Oil collector for Pumpunit collect the lubrication oil in the low pressure circulation barrels and other equipment. The oil will be released in the condition of low pressure to reduce the loss of ammonia and ensure staff safety

* Design Pressure: 2.1Mpa

* Air Tight Test: 2.1Mpa



技术参数 Parameter Table

型号 Model	设计温度 Design Temperature ℃	液压试验压力 Hydraulic Test Pressure MPa	容积 Volume m ³	设备尺寸 Dimension		重量 Weight kg
				圆筒直径 Cylinder Diameter, mm	长度 Length mm	
				BJY-150	50	

注：1. 主要配套应用于氨液循环泵组
2. 也可应用于冰水模块化装置中

Note: Mainly used in ammonia liquid circulating pump unit
Can also be used for ice modular apparatus unit

氨液分离器

Ammonia Separator

能力范围 Scope

容积 | Volume

0.08-7.6 m³

产品特性 Features

- 用以分离来自蒸发器的氨气所挟带的液氨，防止液氨进到氨压缩机产生液力冲击造成事故，此外还用以分离节流产生的气体，提高蒸发器的有效传热面积
- 设计温度：43℃
- 设计压力：1.6MPa
- 液压试验压力：2.0MPa
- 气密试验压力：1.6MPa

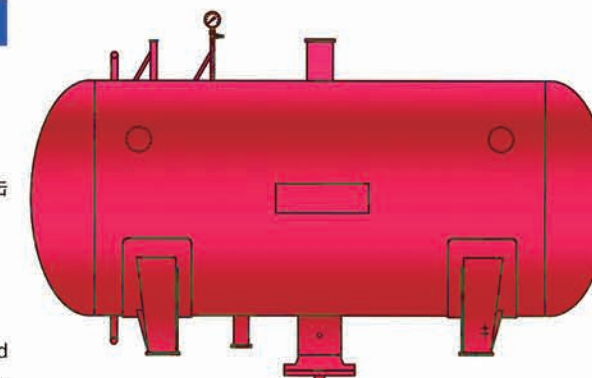
* To separator liquid ammonia from gas sourced from evaporator, and to avoid liquid hamper caused by liquid ammonia entering into compressor. Meanwhile, improve evaporator effective heat transfer area.

* Design Temp: 43℃

* Design Pressure: 1.6 Mpa

* Hydraulic Test: 2.0 MPa

* Air Tight Test: 1.6 Mpa



氨液分离器技术参数

Ammonia separator technology parameter

型号 Model	容积 Volume m ³	设备尺寸 Dimension		重量 Weight kg
		筒体直径 Cylinder Dia. mm	高度 Height mm	
		AF-65	0.08	
AF-80	0.17	φ426	1630	172
AF-100	0.3	φ516	1814	212
AF-125	0.5	φ616	2114	347
AF-150	1.1	φ816	2541	542
AF-150A	1.7	φ1016	2611	706
AF-200	1.7	φ1016	2611	750
AF-200A	2.6	φ1220	2713	1051
AF-250	3.1	φ1220	3213	1290
AF-250A	4.4	φ1420	3313	1520
AF-300	4.4	φ1420	3313	1605
AF-300A	7.6	φ1828	3517	2724

注：型号中A表示较大直径筒体
Note: "A" in the model stands for larger dia.cylinder

卧式氨液分离器技术参数

Horizontal Ammonia Separator Technology Parameter

型号 Model	容积 Volume m ³	设备尺寸 Dimension			重量 Weight kg
		筒体直径 Cylinder Dia. mm	长度 Length mm	高度 Height mm	
		WAF-80	1.1	φ816	
WAF-100	2.1	φ1016	2922	1538	913
WAF-125	3.2	φ1220	3023	1738	1318
WAF-150	5.2	φ1420	3623	1942	1780
WAF-200	6.9	φ1624	3727	2146	2530

辅助贮液器

Second Ammonia Receiver

能力范围 Scope

容积 | Volume

0.15-1.4 m³

产品特性 Features

- 为油冷却器提供液态制冷剂，同时分离从油冷却器回气中夹带的制冷剂
- 设计压力：2.1 MPa
- 设计温度：50℃
- 液压试验压力：2.63MPa
- 气密试验压力：2.1 MPa

* Supply liquid ammonia to oil cooler. And separator and collect ammonia from air returned from oil cooler.

* Design Pressure: 2.1 Mpa

* Design Temp: 50℃

* Hydraulic Test: 2.63MPa

* Air Tight Test: 2.1Mpa



技术参数 Parameter Table

型号 Model	容积 Volume	适用的蒸发温度 Evaporative Temp	设备尺寸 Dimension			重量 Weight
			长 (L)	宽 (W)	高 (H)	
	m ³	℃	mm	mm	mm	kg
FZA6A	0.15	全温区	2278	325	675	188
FZA12A	0.15	全温区	2278	325	675	192
FZA18A	0.15	全温区	2278	325	675	194
FZA35A	0.15	≤ -15℃	2278	325	675	192
FZA35B	0.15	≥ -15℃	2278	325	675	191
FZA60A	0.3	≤ -15℃	2528	426	776	335
FZA60B	0.3	≥ -15℃	2528	426	776	391
FZA90A	0.46	≤ -15℃	2622	516	866	471
FZA90B	0.46	≥ -15℃	2622	516	866	485
FZA150A	0.73	≤ -15℃	2872	616	966	625
FZA150B	0.73	≥ -15℃	2872	616	966	655
FZA240A	1.4	≤ -15℃	3172	816	1166	903
FZA240B	1.4	≥ -15℃	3172	816	1166	947

氨液循环泵组

Ammonia Circulating Pump Unit

能力范围 Scope

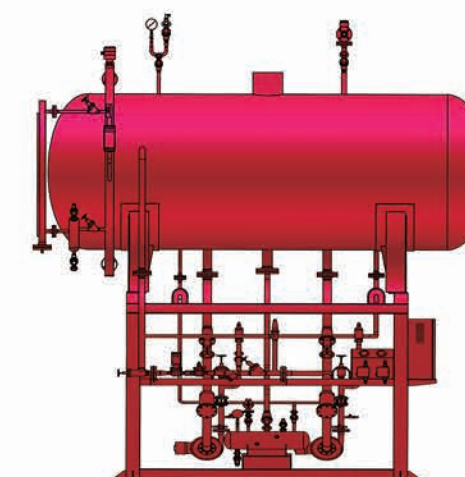
容积 | Volume

1.7-22.3 m³

产品特性 Features

- 由低压循环桶、集油器、结构钢架子、节流装置、液位控制装置和氨泵等组成，氨泵对节流后的液氨及蒸发器回流的液氨加压再供给蒸发器，用于过量供液系统

* The unit is composed by low pressure circuted vessel, receiver, steel structure, throttle device, liquid level device and ammonia pumps. Pump pressurizes ammonia from evaporator as well as ammonia after throttling to evaporator again.



技术参数 Parameter Table

型号 Model	低压循环桶 Low Pressure C			设备尺寸 Dimension			氨泵 Ammonia Pump			蒸发温度 -15℃ 时匹配主机的 最大冷量 Max. Ref. Cap. in -15℃	重量 Weight
	容积 Volume	缓冲容积 Buffer Volume	收纳容积 Storage Volume	长 (L)	宽 (W)	高 (H)	流量 Flow Rate	扬程 Head	电机功率 Motor Power		
	m ³	m ³	m ³	mm	mm	mm	m ³ /h	m	kW	kW	kg
AX2B1.7	1.7	0.3	0.5	3780	1850	3322	6	50	3	381	1490
AX2B2.2	2.2	0.4	0.6	3800	1890	3422	6	50	3	500	1590
AX2B3.9	3.9	1	0.9	4450	2020	3670	6	50	3	830	2040
AX2B4.6	4.6	1.3	1	4480	2370	4784	6	50	3	1002	2800
AX2B6.5	6.5	2.1	1.2	4530	2510	5036	6	50	3	1394	3260
AX4B8.6	8.6	3	1.7	4580	2600	5290	6	50	3	1625	4575
AX4B12	12	4.4	2.2	5030	2880	4828	6	50	3	2390	6171
AX4B15	15	5.8	2.4	5130	3090	5028	6	50	3	3054	6785
AX4B18	18.5	6.9	4.3	5230	3290	5242	20	50	6.5	3484	8410
AX4B22	22.3	8.1	5.2	6230	3290	5222	20	50	6.5	4397	9620

注:

1. 表中冷量基于冷凝温度35℃, 液体过冷度5℃
2. 蒸发温度-5~-40℃
3. 各蒸发温度下液氨的单位流量, 请联系厂家提供

Note:

- Ref. Cap calculation is based on condensing temp: 35℃, and supercool temp: 5℃
- Evaporative Temp: -5~-40℃
- Please contact with manufacturer for ammonia flow rate under evaporative different temp.

低压循环贮液桶

Low Pressure Circulated Vessel

能力范围 Scope

容积 | Volume

1.59-22.3 m³

产品特性 Features

- 用以分离蒸发器返回气体中所带液体并贮存，液体经过加压重新供入系统。
- 设计温度: 43℃
- 设计压力: 1.6MPa
- 液压试验压力: 2.0MPa
- 气密试验压力: 1.6MPa

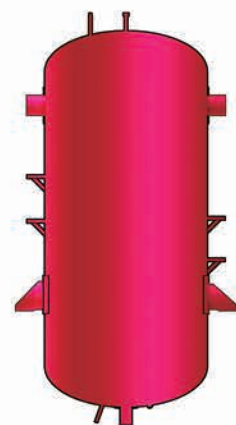
* It is used to collect ammonia liquid returned from evaporator and preserve them. Pressurized ammonia into system again.

* Design Temp: 43℃

* Design Pressure: 1.6Mpa

* Hydraulic Test 2.0MPa

* Air Tight Test 1.6Mpa



技术参数 Parameter Table

型号 Model	容积 Volume m ³	设备尺寸 Dimension		重量 Weight kg
		圆筒直径 Cylinder Dia. mm	高度 Height mm	
DXZ-1.5	1.59	φ 816	3888	723
DXZ-2.5	2.54	φ 1016	3995	913
DXZ-3.5	3.73	φ 1220	4096	1444
DXZ-5.0	5.2	φ 1420	4193	1687
DXZ-7.0	6.9	φ 1624	4300	2364
DXZ-10	10	φ 1828	4854	3374
DXZ-12	12.6	φ 2028	4954	3964
DXZ-15	15.5	φ 2232	5058	5103

技术参数 (卧式) Parameter Table(Horizontal)

型号 Model	容积 Volume m ³	设备尺寸 Dimension			重量 Weight kg
		长度 Length mm	长度 Length mm	高度 Height mm	
DXA1.7	1.7	3522	1250	1751	957
DXA2.2	2.2	3572	1350	1851	1053
DXA3.9	3.9	4272	1650	2051	1468
DXA4.6	4.6	4323	1750	2275	1884
DXA6.5	6.5	4423	1950	2475	2310
DXAL8.6	8.6	4527	2150	2454	3274
DXAL12	12	5031	2350	2678	4608
DXAL15	15	5131	2550	2878	5185
DXAL18	18.5	5235	2750	3082	6408
DXAL22	22.3	6235	2750	3082	7590

中间冷却器

Inter Cooler

能力范围 Scope

换热面积 | Heat Exchange Area

2-35m²

产品特性 Features

- 用于双级或多级压缩机的制冷系统中，作为冷却低压级或低压压缩机排出的氨过热蒸汽用，同时对高压氨液进行过冷，来提高制冷量
- 设计温度: 筒体内43℃，盘管内50℃
- 设计压力: 筒体内1.6MPa，盘管内2.1MPa
- 液压试验压力: 筒体内2.0MPa，盘管内2.63MPa
- 气密试验压力: 筒体内1.6MPa，盘管内2.1MPa

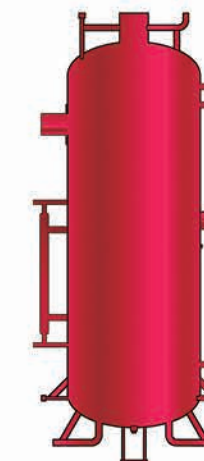
* The unit is applied in dual-stage or multi-stage compressor unit system. It is used to cool over-heat gas exhausted from low pressure stage or low pressure compressor, as well as over-cooling high pressure ammonia liquid to improve refrigeration capacity.

* Design Temp: Inside Cylinder 43℃, Inside Coil 50℃

* Design Pressure: Inside Cylinder 1.6MPa, Inside Coil 2.1MPa

* Hydraulic Test: Inside Cylinder 2.0MPa, Inside Coil 2.63MPa

* Air Tight Test: Inside Cylinder 1.6MPa, Inside Coil 2.1 MPa



技术参数 Parameter Table

型号 Model	换热面积 Heat Exchange Area m ²	设备尺寸 Dimension		重量 Weight kg
		筒体直径 Cylinder Dia. mm	高度 Height mm	
ZL-2.0	2	φ 516	2814	417
ZL-3.5	3.5	φ 616	2864	530
ZL-5.0	5	φ 816	3264	831
ZL-8.0	8	φ 1016	3264	1203
ZL-10	10	φ 1220	3613	1815
ZL-16	16	φ 1220	3613	1953
ZL-20	20	φ 1624	3869	2805
ZL-25	25	φ 1624	3869	2921
ZL-30	30	φ 1624	4069	3139
ZL-35	35	φ 1824	3957	3792